

KAWARTHA PINE RIDGE DISTRICT SCHOOL BOARD

TO: Resource Committee

TOPIC: **City and County of Peterborough Accommodation Planning Update**

INITIATOR: April Foster, Superintendent, Business and Corporate Services
Drew McNaughton, Associate Director
Glen Payne, Superintendent, Student Achievement
James Brake, Superintendent, Student Achievement
Jodi Sepkowski, Superintendent, Student Achievement
John Ford, Superintendent, Student Achievement

BACKGROUND

1. At the February 28, 2024, Resource Committee meeting, staff presented an initial report, the City and County of Peterborough Accommodation Planning: Background Study, which rationalized the need for a school attendance area, program offering and/or grade/cohort review.
2. At the April 3, 2024, Resource Committee meeting, Administration and Planning Services staff prepared and presented four accommodation planning concepts, which were intended to balance enrolment across the City and County of Peterborough schools.
3. A community engagement meeting was held on Wednesday, April 17, 2024, at Kenner Collegiate Vocational Institute (CVI). The meeting was organized in an open house format. This meeting provided community members with the opportunity to review the accommodation planning concepts and ask questions of administrative staff and trustees. Other opportunities for community engagement included an electronic feedback option.
4. Administrative staff considered the community feedback, together with the following guiding principles identified at the start of this project to evaluate the proposed solutions:
 - providing high quality programs for all students;
 - developing long-term, sustainable plans that balance enrolment;
 - maintaining walkable routes to school, and
 - maintaining efficient transportation services.
5. Following the community engagement meeting and after review of the feedback considered, administration presented two refined concepts (Concept A.1 (Appendix A) and Concept E (Appendix B)) to the Resource Committee at the September 11, 2024 meeting.
6. Community engagement meetings were held to provide community members with the opportunity to review the revised accommodation planning concepts and ask questions of administrative staff and trustees. An electronic feedback option

was also available.

The meetings were held on the following dates and locations:

- October 1, 2024 – 6:00 p.m. – Kaawaate East City Public School (PS)
- October 10, 2024 – 6:00 p.m. – Millbrook/South Cavan PS
- October 17, 2024 – 6:00 p.m. – Adam Scott CVI

7. Following the community engagement meetings and after review of the feedback considered, administration presented one additional concept (Concept A.2 (Appendix C)) to the Resource Committee at the November 6, 2024 meeting.

STATUS

8. Feedback gathered from the three Community Engagement opportunities on October 1, 10 and 17, as well as the feedback received through the online surveys, and directly through email submission, has been consolidated. A full summary of the community engagement feedback is attached as Appendix D.
9. Following the November 6, 2024 Resource Committee meeting, administration has continued to conduct further analysis on Concept A.1, Concept A.2 and Concept E. After further review and in consideration of feedback from the community, administration removed Concept E from consideration due to the following reasons:
 - Although secondary enrolment across the Peterborough region secondary schools is relatively balanced in this concept, enrolment at Crestwood Secondary School (SS) decreases over the long term with utilization rates falling below 80%.
 - Boundary adjustments between Queen Mary PS and Queen Elizabeth PS impacts students' ability to walk to school. Some students who would have had the ability to walk to school, would now require bus transportation.
 - The relocation of the Grade 7 and 8 cohort from Adam Scott Intermediate School (i.e., English stream students from Edmison Heights PS and R.F. Downey PS) requires students to be transported to Queen Mary PS, whereas some of these students would walk to Adam Scott Intermediate School.
 - From a programming perspective, it is not considered optimal to have a single-track French Immersion program in the intermediate school.
10. This leaves Concept A.1 and Concept A.2 for final decision to be made at the December 10, 2024 Board meeting. To assist trustees with the decision, attached as Appendix E is an analysis comparing the remaining concepts to the guiding principles.

BUDGET IMPLICATIONS

11. Budget implications are noted through the cost analysis shared in Appendix A and Appendix C.

RECOMMENDATION

1. That the City and County of Accommodation Planning Update report, dated November 27, 2024, be received for information.

April Foster
Superintendent, Business and Corporate Services

Drew McNaughton
Associate Director

Glen Payne
Superintendent, Student Achievement

James Brake
Superintendent, Student Achievement

Jodi Sepkowski
Superintendent, Student Achievement

John Ford
Superintendent, Student Achievement

City and County of Peterborough Accommodation Planning
 Concept A.1

Adam Scott Collegiate Vocational Institute Family of Schools	
SCHOOL	IMPACT
Chemong Public School (PS)	<p>Would become part of Crestwood Secondary School (SS) family of schools.</p> <p>Students would attend Crestwood SS for Grades 9 to 12, with Grade 8 students from Chemong PS starting in Grade 9 at Crestwood SS in September 2027.</p> <p>Students from Chemong PS would attend Westmount PS for Senior Kindergarten (SK) to Grade 6 and Adam Scott Intermediate School for Grades 7 and 8 for French Immersion, with SK students starting at Westmount PS in September 2025. Existing French Immersion students may remain at Edmison Heights PS.</p>
Highland Heights PS	<p>Would become part of Crestwood SS family of schools.</p> <p>Students would attend Crestwood SS for Grades 9 to 12. Grade 8 students from Highland Heights PS would continue to attend Adam Scott Collegiate Vocational Institute (CVI) in the 2025-2026 and 2026-2027 school years.</p> <p>Highland Heights PS would become a Junior Kindergarten (JK) to Grade 6 school. Students would attend Crestwood Intermediate School for Grades 7 and 8, with students starting in Grade 7 at Crestwood Intermediate School in September 2025.</p> <p>Students from Highland Heights PS would attend Westmount PS for French Immersion, with SK students starting at Westmount PS in September 2025. Existing French Immersion students may remain at Edmison Heights PS.</p>

**City and County of Peterborough Accommodation Planning
Concept A.1**

Crestwood Secondary School Family of Schools	
SCHOOL	IMPACT
Millbrook/South Cavan PS	<p>Would become part of Kenner CVI family of schools.</p> <p>Students would attend Kenner Intermediate School and Kenner CVI for Grades 7 to 12, with Grade 7 students from Millbrook/South Cavan PS attending Kenner Intermediate School starting in September 2025.</p> <p>French Immersion students from Millbrook/South Cavan PS would attend Prince of Wales for SK to Grade 8, with SK students starting at Prince of Wales PS in September 2025. Existing French Immersion students may remain at Westmount PS/Adam Scott Intermediate School.</p>
North Cavan PS	<p>Would become part of Kenner CVI family of schools.</p> <p>Students would attend Kenner Intermediate School and Kenner CVI for Grades 7 to 12, with Grade 7 students from North Cavan PS attending Kenner Intermediate School starting in September 2025.</p> <p>French Immersion students from North Cavan PS would attend Prince of Wales for SK to Grade 8, with SK students starting at Prince of Wales PS in September 2025. Existing French Immersion students may remain at Westmount PS/Adam Scott Intermediate School.</p>

Kenner Collegiate Vocational Institute Family of Schools	
SCHOOL	IMPACT
Keith Wightman PS	<p>Would become a JK to Grade 8 school, feeding directly into Kenner CVI for Grade 9, with Grade 7 students remaining at Keith Wightman PS starting in September 2025.</p>
Otonabee Valley PS	<p>Would become a JK to Grade 8 school, feeding directly into Kenner CVI for Grade 9, with Grade 7 students remaining at Otonabee Valley PS starting in September 2025.</p> <p>Grade 7 and 8 students from Kaawaate East City PS would attend Otonabee Valley PS, with Grade 7 students from Kaawaate East City PS starting in Grade 7 at Otonabee Valley PS in September 2025.</p>
Roger Neilson PS	<p>Would become a JK to Grade 8 school, feeding directly into Kenner CVI for Grade 9, with Grade 7 students remaining at Roger Neilson PS starting in September 2025.</p>

**City and County of Peterborough Accommodation Planning
Concept A.1**

Norwood District High School Family of Schools	
SCHOOL	IMPACT
Havelock Belmont PS	<p>French Immersion students from within Havelock Belmont PS boundary would attend Hillcrest PS and then Campbellford District High School (HS), with SK students starting at Hillcrest PS in September 2025. Existing French Immersion students may remain at Kaawaate East City PS/Adam Scott Intermediate School/Adam Scott CVI.</p> <p>No change to English stream students.</p>
Norwood District PS	<p>French Immersion students from within Norwood District PS boundary would attend Hillcrest PS and then Campbellford District HS, with SK students starting at Hillcrest PS in September 2025. Existing French Immersion students may remain at Kaawaate East City PS/Adam Scott Intermediate School/Adam Scott CVI.</p> <p>No change to English stream students.</p>

Thomas A. Stewart Secondary School Family of Schools	
SCHOOL	IMPACT
Kaawaate East City PS	<p>Kaawaate East City PS would become dual-track JK/SK to Grade 6. Students would attend Otonabee Valley PS for Grades 7 to 8, with Grade 7 students from Kaawaate East City PS starting in Grade 7 at Otonabee Valley PS in September 2025. Kaawaate East City PS students would continue to attend Thomas A. Stewart SS for Grades 9 to 12. Grade 7 and 8 French Immersion students would continue to attend Adam Scott Intermediate School and Adam Scott CVI.</p>
North Shore PS	<p>French Immersion students who attend Westmount PS and reside in the area generally described as being bounded by the 6th Line and the Otonabee River to the north, the Otonabee River to the east, Rice Lake to the south, and Highway 28 to the west of the North Shore PS school boundary would attend Prince of Wales PS for French Immersion. SK students would start at Prince of Wales PS in September 2025. Existing French Immersion students may remain at Westmount PS/Adam Scott Intermediate School.</p> <p>French Immersion students who attend Kaawaate East City PS and reside in the area generally described as being bounded by Highway 7 and Division Road to the north, Cameron Line to the east, Rice Lake to the south and the Otonabee River to the west would attend Prince of Wales PS for French Immersion. SK students would start at Prince of Wales PS in September 2025. Existing French Immersion students may remain at Kaawaate East City PS/Adam Scott Intermediate School.</p> <p>No boundary change for English stream students.</p>

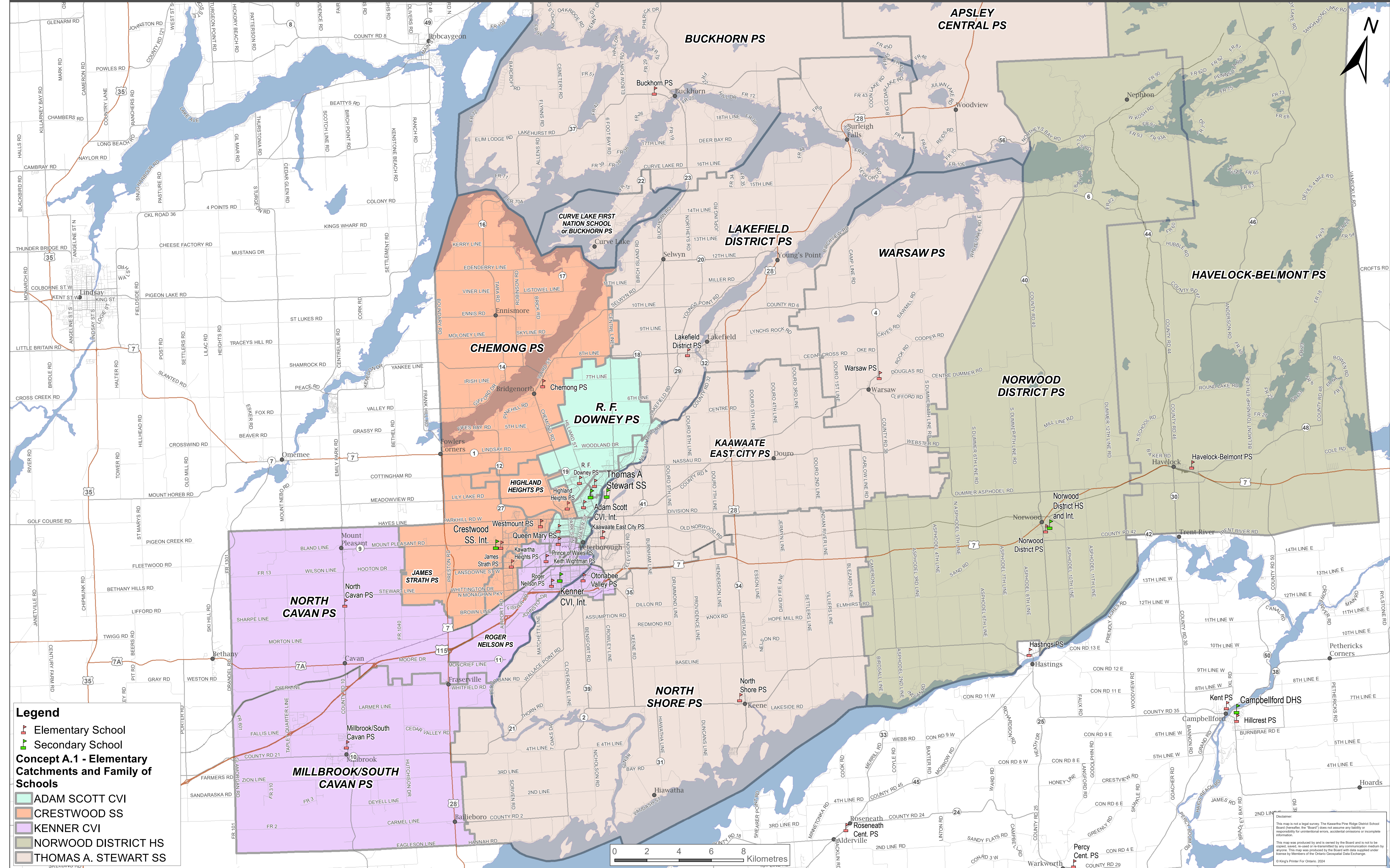
**City and County of Peterborough Accommodation Planning
Concept A.1 – Enrolment Projections**

Adam Scott CVI Family of Schools																							
School	OTG (Capacity)	2023-2024 OCT 31 ADE		2024-2025 1-YR Projection		2025-2026 2-YR Projection		2026-2027 3-YR Projection		2027-2028 4-YR Projection		2028-2029 5-YR Projection		2029-2030 6-YR Projection		2030-2031 7-YR Projection		2031-2032 8-YR Projection		2032-2033 9-YR Projection		2033-2034 10-YR Projection	
		Students	Utilization	Students	Utilization	Students	Utilization	Students	Utilization	Students	Utilization	Students	Utilization	Students	Utilization	Students	Utilization	Students	Utilization	Students	Utilization	Students	Utilization
Adam Scott CVI (9-12, FI 9-12)	1,017	993	98%	1,017	100%	932	92%	889	87%	830	82%	796	78%	826	81%	844	83%	843	83%	826	81%	813	80%
Adam Scott IS (7-8)	225	298	132%	320	142%	338	150%	344	153%	328	146%	343	152%	352	156%	323	144%	304	135%	321	143%	335	149%
Total in Physical Building	1,242	1,291	104%	1,337	108%	1,270	102%	1,233	99%	1,158	93%	1,139	92%	1,178	95%	1,167	94%	1,147	92%	1,147	92%	1,148	92%
Edmison Heights PS (JK-6, FI SK-6)	432	546	126%	531	123%	460	106%	447	103%	432	100%	414	96%	405	94%	402	93%	409	95%	403	93%	393	91%
Queen Elizabeth PS (JK-8)	295	220	75%	210	71%	192	65%	188	64%	180	61%	180	61%	184	62%	182	62%	177	60%	173	59%	180	61%
Queen Mary PS (JK-8)	421	363	86%	370	88%	360	86%	352	84%	335	80%	318	76%	312	74%	292	69%	286	68%	286	68%	279	66%
R.F. Downey PS (JK-6)	222	265	119%	264	119%	275	124%	270	122%	275	124%	273	123%	275	124%	275	124%	277	125%	271	122%	265	119%
Total	2,612	2,685	103%	2,712	104%	2,557	98%	2,490	95%	2,380	91%	2,324	89%	2,354	90%	2,318	89%	2,296	88%	2,280	87%	2,265	87%
Crestwood SS Family of Schools																							
School	OTG (Capacity)	2023-2024 OCT 31 ADE		2024-2025 1-YR Projection		2025-2026 2-YR Projection		2026-2027 3-YR Projection		2027-2028 4-YR Projection		2028-2029 5-YR Projection		2029-2030 6-YR Projection		2030-2031 7-YR Projection		2031-2032 8-YR Projection		2032-2033 9-YR Projection		2033-2034 10-YR Projection	
		Students	Utilization	Students	Utilization	Students	Utilization	Students	Utilization	Students	Utilization	Students	Utilization	Students	Utilization	Students	Utilization	Students	Utilization	Students	Utilization	Students	Utilization
Crestwood SS (9-12)	765	737	96%	732	96%	752	98%	755	99%	761	99%	791	103%	800	105%	808	106%	821	107%	794	104%	801	105%
Crestwood IS (7-8)	184	271	147%	294	160%	261	142%	183	99%	169	92%	167	91%	175	95%	179	97%	172	93%	186	101%	193	105%
Total in Physical Building	949	1,008	106%	1,026	108%	1,013	107%	938	99%	930	98%	958	101%	975	103%	987	104%	993	105%	980	103%	994	105%
Chemong PS (JK-8)	501	444	89%	455	91%	450	90%	442	88%	435	87%	423	84%	418	83%	403	80%	393	78%	392	78%	404	81%
Highland Heights PS (JK-6)	300	211	70%	244	81%	244	81%	244	81%	257	86%	271	90%	280	93%	298	99%	310	103%	321	107%	335	112%
James Strath PS (JK-8)	714	616	86%	617	86%	608	85%	601	84%	616	86%	615	86%	604	85%	604	85%	599	84%	610	85%	602	84%
Kawartha Heights PS (JK-6)	268	248	93%	241	90%	228	85%	232	87%	235	88%	252	94%	255	95%	263	98%	269	100%	279	104%	280	104%
Westmount PS (JK-6, FI SK-6)	562	510	91%	496	88%	483	86%	478	85%	464	83%	466	83%	468	83%	480	85%	480	85%	484	86%	492	88%
Total	3,294	3,037	92%	3,079	93%	3,026	92%	2,935	89%	2,937	89%	2,985	91%	3,000	91%	3,035	92%	3,044	92%	3,066	93%	3,107	94%
Kenner CVI Family of Schools																							
School	OTG (Capacity)	2023-2024 OCT 31 ADE		2024-2025 1-YR Projection		2025-2026 2-YR Projection		2026-2027 3-YR Projection		2027-2028 4-YR Projection		2028-2029 5-YR Projection		2029-2030 6-YR Projection		2030-2031 7-YR Projection		2031-2032 8-YR Projection		2032-2033 9-YR Projection		2033-2034 10-YR Projection	
		Students	Utilization	Students	Utilization	Students	Utilization	Students	Utilization	Students	Utilization	Students	Utilization	Students	Utilization	Students	Utilization	Students	Utilization	Students	Utilization	Students	Utilization
Kenner CVI (9-12)	918	570	62%	580	63%	526	57%	489	53%	569	62%	646	70%	752	82%	868	95%	834	91%	856	93%	863	94%
Kenner IS (7-8)	306	161	53%	173	57%	173	57%	176	58%	188	61%	201	66%	183	60%	176	58%	229	75%	224	73%	206	67%
Total in Physical Building	1,224	731	60%	753	62%	699	57%	665	54%	757	62%	847	69%	935	76%	1,044	85%	1,063	87%	1,080	88%	1,069	87%
Keith Wightman PS (JK-8)	353	238	67%	242	69%	298	84%	299	85%	291	82%	289	82%	290	82%	290	82%	286	81%	279	79%	276	78%
Millbrook/South Cavan PS (JK-6)	447	585	131%	599	134%	633	142%	644	144%	660	148%	669	150%	679	152%	682	153%	679	152%	693	155%	698	156%
North Cavan PS (JK-6)	130	210	162%	211	162%	214	165%	201	155%	201	155%	191	147%	197	152%	203	156%	193	148%	198	152%	189	145%
Otonabee Valley PS (JK-8)	459	255	56%	251	55%	308	67%	358	78%	358	78%	354	77%	366	80%	376	82%	363	79%	368	80%	370	81%
Prince of Wales PS (JK-8, FI SK-8)	622	557	90%	553	89%	627	101%	603	97%	591	95%	585	94%	583	94%	593	95%	580	93%	573	92%	571	92%
Roger Neilson PS (JK-8)	338	250	74%	244	72%	312	92%	302	89%	299	88%	291	86%	292	86%	297	88%	296	88%	293	87%	296	88%
Total	3,573	2,826	79%	2,853	80%	3,091	87%	3,072	86%	3,157	88%	3,226	90%	3,342	94%	3,485	98%	3,460	97%	3,484	98%	3,469	97%

City and County of Peterborough Accommodation Planning
 Concept A.1 – Enrolment Projections

Norwood District HS Family of Schools																							
School	OTG (Capacity)	2023-2024 OCT 31 ADE		2024-2025 1-YR Projection		2025-2026 2-YR Projection		2026-2027 3-YR Projection		2027-2028 4-YR Projection		2028-2029 5-YR Projection		2029-2030 6-YR Projection		2030-2031 7-YR Projection		2031-2032 8-YR Projection		2032-2033 9-YR Projection		2033-2034 10-YR Projection	
		Students	Utilization	Students	Utilization	Students	Utilization	Students	Utilization	Students	Utilization	Students	Utilization	Students	Utilization	Students	Utilization	Students	Utilization	Students	Utilization	Students	Utilization
Norwood District HS (9-12)	429	285	66%	280	65%	303	71%	314	73%	311	72%	318	74%	335	78%	348	81%	354	83%	367	86%	372	87%
Norwood District IS (7-8)	138	133	96%	127	92%	138	100%	145	105%	149	108%	150	109%	153	111%	168	122%	174	126%	169	122%	179	130%
Total in Physical Building	567	418	74%	407	72%	441	78%	459	81%	460	81%	468	83%	488	86%	516	91%	528	93%	536	95%	551	97%
Havelock Belmont PS (JK-6)	257	215	84%	212	82%	207	81%	210	82%	213	83%	215	84%	223	87%	225	88%	227	88%	226	88%	221	86%
Norwood District PS (JK-6)	323	328	102%	341	106%	356	110%	356	110%	372	115%	386	120%	404	125%	404	125%	417	129%	429	133%	430	133%
Total	1,147	961	84%	960	84%	1,004	88%	1,025	89%	1,045	91%	1,069	93%	1115	97%	1145	100%	1172	102%	1191	104%	1,202	105%

Thomas A. Stewart SS Family of Schools																							
School	OTG (Capacity)	2023-2024 OCT 31 ADE		2024-2025 1-YR Projection		2025-2026 2-YR Projection		2026-2027 3-YR Projection		2027-2028 4-YR Projection		2028-2029 5-YR Projection		2029-2030 6-YR Projection		2030-2031 7-YR Projection		2031-2032 8-YR Projection		2032-2033 9-YR Projection		2033-2034 10-YR Projection	
		Students	Utilization	Students	Utilization	Students	Utilization	Students	Utilization	Students	Utilization	Students	Utilization	Students	Utilization	Students	Utilization	Students	Utilization	Students	Utilization	Students	Utilization
Thomas A. Stewart SS (9-12)	1,290	1,282	99%	1,300	101%	1,327	103%	1,326	103%	1,358	105%	1,362	106%	1,348	104%	1,371	106%	1,382	107%	1,413	110%	1,429	111%
Apsley PS (JK-8)	141	171	121%	173	123%	178	126%	188	133%	180	128%	174	123%	159	113%	162	115%	158	112%	150	106%	147	104%
Buckhorn PS (JK-6)	118	165	140%	172	146%	185	157%	203	172%	208	176%	214	181%	230	195%	236	200%	239	203%	243	206%	247	209%
Kaawaate East City PS (JK-6, FI SK-6)	675	784	116%	816	121%	760	113%	707	105%	723	107%	733	109%	721	107%	724	107%	723	107%	712	105%	711	105%
Lakefield District PS (JK-8, FI SK-8)	678	674	99%	685	101%	692	102%	707	104%	717	106%	731	108%	721	106%	723	107%	729	108%	740	109%	748	110%
North Shore PS (JK-8)	441	394	89%	399	90%	391	89%	401	91%	391	89%	397	90%	402	91%	406	92%	407	92%	400	91%	406	92%
Warsaw PS (JK-8)	187	142	76%	132	71%	138	74%	140	75%	143	76%	144	77%	149	80%	150	80%	146	78%	147	79%	150	80%
Total	3,530	3,612	102%	3,677	104%	3,671	104%	3,672	104%	3,720	105%	3,755	106%	3,730	106%	3,772	107%	3,784	107%	3,805	108%	3,838	109%

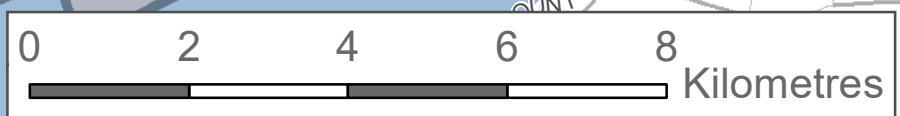


Legend

- Elementary School
- Secondary School

Concept A.1 - Elementary Catchments and Family of Schools

- ADAM SCOTT CVI
- CRESTWOOD SS
- KENNER CVI
- NORWOOD DISTRICT HS
- THOMAS A. STEWART SS



Disclaimer:
This map is not a legal survey. The Kawartha Pine Ridge District School Board (hereafter, the "Board") does not assume any liability or responsibility for unintentional errors, accidental omissions or incomplete information.
This map was produced by and is owned by the Board and is not to be copied, saved, re-used or re-transmitted by any communication medium by anyone. This map was produced by the Board with data supplied under license by Members of the Ontario Geospatial Data Exchange.
© King's Printer For Ontario, 2024

City and County of Peterborough Transportation Cost Analysis

***Enrolment numbers are listed below the school names in column B as average students in a grade cohort / newly bussed students)*

Small vehicle capacity ~ 20 students - \$53,000

Large vehicle capacity ~ 46 students - \$78,500

Concept A.1

	2024-2025	2025-2026	2026-2027	2027-2028	2028-2029	2029-2030	2030-2031
<p>Transition Plan Transportation (52)</p> <p>Kaawaate East City PS to Otonabee Valley PS (52/21)</p>	n/a	<p>Grade 7's attend Otonabee Valley PS (52) 52 students being transported to Otonabee Valley PS. 31 would have been previously bussed. 21 new busses. Assume in Year 1, a large bus is required \$78,500</p>	<p>Grade 7- 8's attend Otonabee Valley PS (101) Year 2 would have 101 students being transported to Otonabee Valley PS. 62 would have been previously bussed. 42 new busses. Assume in Year 2, a second large bus is required \$78,500</p>	<p>For year 3 and beyond, assume the reduction of 62 bussed students from Kaawaate East City PS releases a large and small bus from the transportation network that is reallocated to Otonabee Valley PS. Therefore, no future transportation costs are calculated.</p>	<p>For year 3 and beyond, assume the reduction of 62 bussed students from Kaawaate East City PS releases a large and small bus from the transportation network that is reallocated to Otonabee Valley PS. Therefore, no future transportation costs are calculated.</p>	<p>For year 3 and beyond, assume the reduction of 62 bussed students from Kaawaate East City PS releases a large and small bus from the transportation network that is reallocated to Otonabee Valley PS. Therefore, no future transportation costs are calculated.</p>	<p>For year 3 and beyond, assume the reduction of 62 bussed students from Kaawaate East City PS releases a large and small bus from the transportation network that is reallocated to Otonabee Valley PS. Therefore, no future transportation costs are calculated.</p>
<p>Transition Plan (0) Transportation</p> <p>North Shore PS FI to Prince of Wales PS (30/0)</p>	n/a	<p>SK students start FI at Prince of Wales PS Do not anticipate additional transportation costs, as routes will be designed to include these students on existing runs</p>	<p>SK - Grade 1 FI at Prince of Wales PS Do not anticipate additional transportation costs, as routes will be designed to include these students on existing runs</p>	<p>SK - Grade 2 FI at Prince of Wales PS Do not anticipate additional transportation costs, as routes will be designed to include these students on existing runs</p>	<p>SK - Grade 3 FI at Prince of Wales PS Do not anticipate additional transportation costs, as routes will be designed to include these students on existing runs</p>	<p>SK - Grade 4 FI at Prince of Wales PS Do not anticipate additional transportation costs, as routes will be designed to include these students on existing runs</p>	<p>SK - Grade 5 FI at Prince of Wales PS Do not anticipate additional transportation costs, as routes will be designed to include these students on existing runs</p>
<p>Transition Plan Transportation (17)</p> <p>Highland Heights PS to Crestwood Intermediate/Secondary School (SS) (27/17)</p>	n/a	<p>Grade 7's attend Crestwood Intermediate (27) In year 1, there will be approximately 17 students on busses that wouldn't have otherwise been. 1 small vehicle required \$53,000</p>	<p>Grades 7 & 8 attend Crestwood Intermediate (49) In year 2, there will be approximately 34 students on busses that wouldn't have otherwise been. 1 large vehicle required offset by the small vehicle added in the PY (only 1 vehicle is needed) \$78,500 - \$53,000 = \$25,500 incremental cost</p>	<p>Grades 7-9 attend Crestwood Intermediate/SS (76) In year 3, there will be approximately 51 students on busses that wouldn't have otherwise been. 1 large vehicle required. Should be able to fit on existing bus implemented in Year 2. No additional cost incurred.</p>	<p>Grades 7-10 attend Crestwood Intermediate/SS (106) In year 4 and beyond, bus routes can be redesigned to move the Adam Scott CVI runs to Crestwood SS that serviced this school. Should not anticipate any further costs for transportation.</p>	<p>Grades 7-11 attend Crestwood Intermediate/SS (140) In year 4 and beyond, bus routes can be redesigned to move the Adam Scott CVI runs to Crestwood SS that serviced this school. Should not anticipate any further costs for transportation.</p>	<p>Grades 7-12 attend Crestwood Intermediate/SS (174) In year 4 and beyond, bus routes can be redesigned to move the Adam Scott CVI runs to Crestwood SS that serviced this school. Should not anticipate any further costs for transportation.</p>
<p>Transition Plan (0) Transportation</p> <p>Chemong PS to Crestwood Secondary School (46/0)</p>	n/a	n/a	n/a	<p>Grade 9's attend Crestwood SS (46) 1 large bus required {46 new students} \$78,500</p>	<p>Grades 9-10 attend Crestwood SS (98) 1 large bus required {52 new students} \$78,500</p>	<p>Grades 9-11 attend Crestwood SS (144) In years 3 and beyond, do not anticipate any incremental transportation costs for Chemong PS students going to Crestwood SS. As students graduate out from Adam Scott, bus routes will be redesigned, and busses reallocated from Adam Scott CVI to Crestwood SS. 1 small vehicle will likely be needed to transport FI students from Chemong catchment to Adam Scott \$53,000</p>	<p>Grades 9-12 attend Crestwood SS (197) In years 3 and beyond, do not anticipate any incremental transportation costs. As students graduate out from Adam Scott CVI, bus routes will be redesigned, and busses reallocated from Adam Scott CVI to Crestwood SS.</p>

**City and County of Peterborough Accommodation Planning
Concept E**

Adam Scott Collegiate Vocational Institute Family of Schools	
SCHOOL	IMPACT
Adam Scott Intermediate School	An intermediate school would be established at Queen Mary (PS) with Grade 7 and 8 English stream students from Edmison Heights PS and R.F. Downey PS (that would normally attend Adam Scott Intermediate School) attending Queen Mary PS. Students from Edmison Heights PS and R.F. Downey PS would start in Grade 7 at Queen Mary PS in September 2025. These students would attend Adam Scott Collegiate Vocational Institute (CVI) for secondary school. French Immersion students would continue to attend Adam Scott Intermediate School and Adam Scott CVI for Grades 7 to 12.
Edmison Heights PS	Grade 7 and 8 English stream students from Edmison Heights PS will attend Queen Mary PS, with students from Edmison Heights PS starting in Grade 7 at Queen Mary PS in September 2025. These students would attend Adam Scott CVI for secondary school. French Immersion students would continue to attend Adam Scott Intermediate School and Adam Scott CVI for Grades 7 to 12.
Highland Heights PS	<p>Would become part of Crestwood Secondary School (SS) family of schools.</p> <p>Students would attend Crestwood SS for Grades 9 to 12. Grade 8 students from Highland Heights PS would continue to attend Adam Scott CVI in the 2025-2026 and 2026-2027 school years.</p> <p>Highland Heights PS would become a Junior Kindergarten (JK) to Grade 6 school. Students would attend Crestwood Intermediate School for Grades 7 and 8, with students starting in Grade 7 at Crestwood Intermediate School in September 2025.</p> <p>Students from Highland Heights PS would attend Westmount PS for French Immersion, with Senior Kindergarten (SK) students starting at Westmount PS in September 2025. Existing French Immersion students may remain at Edmison Heights PS.</p>

City and County of Peterborough Accommodation Planning
Concept E

Adam Scott Collegiate Vocational Institute Family of Schools	
SCHOOL	IMPACT
Queen Elizabeth PS	A boundary adjustment between Queen Elizabeth PS and Queen Mary PS wherein students residing south of Parkhill Road West, east of Donegal Street, Stewart Street and George Street North, west of the Otonabee River would attend Queen Elizabeth PS or Edmison Heights PS for French Immersion. Beginning in September 2025, all new student registrations in this area would attend Queen Elizabeth PS or Edmison Heights PS (French Immersion). Existing students may remain at Queen Mary PS or Prince of Wales (French Immersion).
Queen Mary PS	<p>An intermediate school would be established at Queen Mary PS, with the Grade 7 and 8 English stream students from Edmison Heights PS, Queen Mary PS and R.F. Downey PS attending Queen Mary PS. These students would attend Adam Scott CVI for secondary school.</p> <p>French Immersion students from Edmison Heights PS, Kaawaate East City PS, and Westmount PS would continue to attend Adam Scott Intermediate School and Adam Scott CVI for French Immersion</p> <p>A boundary adjustment between Queen Elizabeth PS and Queen Mary PS wherein students residing south of Parkhill Road West, east of Donegal Street, Stewart Street and George Street North, west of the Otonabee River would attend Queen Elizabeth PS or Edmison Heights PS for French Immersion. Beginning in September 2025, all new student registrations in this area would attend Queen Elizabeth PS or Edmison Heights PS (French Immersion). Existing students may remain at Queen Mary PS or Prince of Wales (French Immersion).</p>
R.F. Downey PS	Grade 7 and 8 students from R.F. Downey PS will attend Queen Mary PS, with Grade 7 students from R.F. Downey PS starting at Queen Mary PS in 2025. These students would attend Adam Scott CVI for secondary school.

**City and County of Peterborough Accommodation Planning
Concept E**

Crestwood Secondary School Family of Schools	
SCHOOL	IMPACT
Millbrook/South Cavan PS	<p>Would become part of Kenner CVI family of schools.</p> <p>Students would attend Kenner Intermediate School and Kenner CVI for Grades 7 to 12, with Grade 7 students from Millbrook/South Cavan PS attending Kenner Intermediate School starting in September 2025.</p> <p>French Immersion students from Millbrook/South Cavan PS would attend Prince of Wales for SK to Grade 8, with SK students starting at Prince of Wales PS in September 2025. Existing French Immersion students may remain at Westmount PS/Adam Scott Intermediate School.</p>
North Cavan PS	<p>Would become part of Kenner CVI family of schools.</p> <p>Students would attend Kenner Intermediate School and Kenner CVI for Grades 7 to 12, with Grade 7 students from North Cavan PS attending Kenner Intermediate School starting in September 2025.</p> <p>French Immersion students from North Cavan PS would attend Prince of Wales for SK to Grade 8, with SK students starting at Prince of Wales PS in September 2025. Existing French Immersion students may remain at Westmount PS/Adam Scott Intermediate School.</p>

Kenner Collegiate Vocational Institute Family of Schools	
SCHOOL	IMPACT
Keith Wightman PS	<p>Would become a JK to Grade 8 school, feeding directly into Kenner CVI for Grade 9, with Grade 7 students remaining at Keith Wightman PS starting in September 2025.</p>
Otonabee Valley PS	<p>Would become a JK to Grade 8 school, feeding directly into Kenner CVI for Grade 9, with Grade 7 students remaining at Otonabee Valley PS starting in September 2025.</p> <p>Grade 7 and 8 students from Kaawaate East City PS would attend Otonabee Valley PS, with Grade 7 students from Kaawaate East City PS starting in Grade 7 at Otonabee Valley PS in September 2025.</p>
Roger Neilson PS	<p>Would become a JK to Grade 8 school, feeding directly into Kenner CVI for Grade 9, with Grade 7 students remaining at Roger Neilson PS starting in September 2025.</p>

**City and County of Peterborough Accommodation Planning
Concept E**

Norwood District High School Family of Schools	
SCHOOL	IMPACT
Havelock Belmont PS	<p>French Immersion students from within Havelock Belmont PS boundary would attend Hillcrest PS and then Campbellford District High School (HS), with SK students starting at Hillcrest PS in September 2025. Existing French Immersion students may remain at Kaawaate East City PS/Adam Scott Intermediate School/Adam Scott CVI.</p> <p>No change to English stream students.</p>
Norwood District PS	<p>French Immersion students from within Norwood District PS boundary would attend Hillcrest PS and then Campbellford District HS, with SK students starting at Hillcrest PS in September 2025. Existing French Immersion students may remain at Kaawaate East City PS/Adam Scott Intermediate School/Adam Scott CVI.</p> <p>No change to English stream students.</p>

Thomas A. Stewart Secondary School Family of Schools	
SCHOOL	IMPACT
Kaawaate East City PS	<p>Kaawaate East City PS would become dual-track JK/SK to Grade 6. Students would attend Otonabee Valley PS for Grades 7 to 8, with Grade 7 students from Kaawaate East City PS starting in Grade 7 at Otonabee Valley PS in September 2025. Kaawaate East City PS students would continue to attend Thomas A. Stewart SS for Grades 9 to 12. Grade 7 and 8 French Immersion students would continue to attend Adam Scott Intermediate School/Adam Scott CVI.</p>
North Shore PS	<p>French Immersion students who attend Westmount PS and reside in the area generally described as being bounded by the 6th Line and the Otonabee River to the north, the Otonabee River to the east, Rice Lake to the south, and Highway 28 to the west of the North Shore PS school boundary would attend Prince of Wales PS for French Immersion. SK students would start at Prince of Wales PS in September 2025. Existing French Immersion students may remain at Westmount PS/Adam Scott Intermediate School.</p> <p>French Immersion students who attend Kaawaate East City PS and reside in the area generally described as being bounded by Highway 7 and Division Road to the north, Cameron Line to the east, Rice Lake to the south and the Otonabee River to the west would attend Prince of Wales PS for French Immersion. SK students would start at Prince of Wales PS in September 2025. Existing French Immersion students may remain at Kaawaate East City PS/Adam Scott Intermediate School.</p> <p>No boundary change for English stream students.</p>

City and County of Peterborough Accommodation Planning
 Concept E - Enrolment Projections

Adam Scott CVI Family of Schools																							
School	OTG (Capacity)	2023-2024 OCT 31 ADE		2024-2025 1-YR Projection		2025-2026 2-YR Projection		2026-2027 3-YR Projection		2027-2028 4-YR Projection		2028-2029 5-YR Projection		2029-2030 6-YR Projection		2030-2031 7-YR Projection		2031-2032 8-YR Projection		2032-2033 9-YR Projection		2033-2034 10-YR Projection	
		Students	Utilization	Students	Utilization	Students	Utilization	Students	Utilization	Students	Utilization	Students	Utilization	Students	Utilization	Students	Utilization	Students	Utilization	Students	Utilization	Students	Utilization
Adam Scott CVI (9-12, FI 9-12)	1,017	993	98%	1,017	100%	1008	99%	1,044	103%	1,045	103%	1061	104%	1,060	104%	1,058	104%	1,056	104%	1,026	101%	993	98%
Adam Scott IS (FI 7-8)	225	298	132%	320	142%	310	138%	241	107%	232	103%	245	109%	251	112%	227	101%	213	95%	215	96%	219	97%
Total in Physical Building	1,242	1,291	104%	1,337	108%	1,318	106%	1,285	103%	1,277	103%	1,306	105%	1,311	106%	1,285	103%	1,269	102%	1,241	100%	1,212	98%
Chemong PS (JK-8)	501	444	89%	455	91%	450	90%	442	88%	435	87%	423	84%	418	83%	403	80%	393	78%	392	78%	404	81%
Edmison Heights PS (JK-6, FI SK-6)	432	546	126%	531	123%	516	119%	504	117%	491	114%	477	110%	469	109%	465	108%	472	109%	466	108%	456	106%
Queen Elizabeth PS (JK-8)	295	220	75%	210	71%	200	68%	204	69%	204	69%	212	72%	224	76%	230	78%	233	79%	237	80%	252	85%
Queen Mary PS (JK-8)	421	363	86%	370	88%	426	101%	488	116%	467	111%	452	107%	449	107%	423	100%	410	97%	417	99%	427	101%
R.F. Downey PS (JK-6)	222	265	119%	264	119%	275	124%	270	122%	275	124%	273	123%	275	124%	275	124%	277	125%	271	122%	265	119%
Total	3,113	3,129	101%	3,167	102%	3,185	102%	3,193	103%	3,149	101%	3,143	101%	3,146	101%	3,081	99%	3,054	98%	3,024	97%	3,016	97%
Crestwood SS Family of Schools																							
School	OTG (Capacity)	2023-2024 OCT 31 ADE		2024-2025 1-YR Projection		2025-2026 2-YR Projection		2026-2027 3-YR Projection		2027-2028 4-YR Projection		2028-2029 5-YR Projection		2029-2030 6-YR Projection		2030-2031 7-YR Projection		2031-2032 8-YR Projection		2032-2033 9-YR Projection		2033-2034 10-YR Projection	
		Students	Utilization	Students	Utilization	Students	Utilization	Students	Utilization	Students	Utilization	Students	Utilization	Students	Utilization	Students	Utilization	Students	Utilization	Students	Utilization	Students	Utilization
Crestwood SS (9-12)	765	737	96%	732	96%	752	98%	755	99%	710	93%	655	86%	606	79%	529	69%	538	70%	536	70%	534	70%
Crestwood IS (7-8)	184	271	147%	294	160%	241	131%	185	101%	180	98%	174	95%	198	108%	174	95%	210	114%	223	121%	214	116%
Total in Physical Building	949	1,008	106%	1,026	108%	993	105%	940	99%	890	94%	829	87%	804	85%	703	74%	748	79%	759	80%	748	79%
Highland Heights PS (JK-6)	300	211	70%	244	81%	244	81%	244	81%	257	86%	271	90%	280	93%	298	99%	310	103%	321	107%	335	112%
James Strath PS (JK-8)	714	616	86%	617	86%	608	85%	601	84%	616	86%	615	86%	604	85%	604	85%	599	84%	610	85%	602	84%
Kawartha Heights PS (JK-6)	268	248	93%	241	90%	228	85%	232	87%	235	88%	252	94%	255	95%	263	98%	269	100%	279	104%	280	104%
Westmount PS (JK-6, FI SK-6)	562	510	91%	496	88%	483	86%	474	84%	463	82%	463	82%	459	82%	468	83%	466	83%	470	84%	478	85%
Total	2,793	2,593	93%	2,624	94%	2,556	92%	2,491	89%	2,461	88%	2,430	87%	2,402	86%	2,336	84%	2,392	86%	2,439	87%	2,443	87%
Kenner CVI Family of Schools																							
School	OTG (Capacity)	2023-2024 OCT 31 ADE		2024-2025 1-YR Projection		2025-2026 2-YR Projection		2026-2027 3-YR Projection		2027-2028 4-YR Projection		2028-2029 5-YR Projection		2029-2030 6-YR Projection		2030-2031 7-YR Projection		2031-2032 8-YR Projection		2032-2033 9-YR Projection		2033-2034 10-YR Projection	
		Students	Utilization	Students	Utilization	Students	Utilization	Students	Utilization	Students	Utilization	Students	Utilization	Students	Utilization	Students	Utilization	Students	Utilization	Students	Utilization	Students	Utilization
Kenner CVI (9-12)	918	570	62%	580	63%	526	57%	489	53%	569	62%	646	70%	752	82%	868	95%	834	91%	856	93%	863	94%
Kenner IS (7-8)	306	161	53%	173	57%	173	57%	176	58%	188	61%	201	66%	183	60%	176	58%	229	75%	224	73%	206	67%
Total in Physical Building	1,224	731	60%	753	62%	699	57%	665	54%	757	62%	847	69%	935	76%	1,044	85%	1,063	87%	1,080	88%	1,069	87%
Keith Wightman PS (JK-8)	353	238	67%	242	69%	298	84%	299	85%	291	82%	289	82%	290	82%	290	82%	286	81%	279	79%	276	78%
Millbrook/South Cavan PS (JK-6)	447	585	131%	599	134%	633	142%	644	144%	660	148%	669	150%	679	152%	682	153%	679	152%	693	155%	698	156%
North Cavan PS (JK-6)	130	210	162%	211	162%	214	165%	201	155%	201	155%	191	147%	197	152%	203	156%	193	148%	198	152%	189	145%
Otonabee Valley PS (JK-8)	459	255	56%	251	55%	308	67%	358	78%	358	78%	354	77%	366	80%	376	82%	363	79%	368	80%	366	80%
Prince of Wales PS (JK-8, FI SK-8)	622	557	90%	553	89%	627	101%	603	97%	591	95%	585	94%	583	94%	593	95%	580	93%	573	92%	571	92%
Roger Neilson PS (JK-8)	338	250	74%	244	72%	312	92%	302	89%	299	88%	291	86%	292	86%	297	88%	296	88%	293	87%	296	88%
Total	3,573	2,826	79%	2,853	80%	3,091	87%	3,072	86%	3,157	88%	3,226	90%	3,342	94%	3,485	98%	3,460	97%	3,484	98%	3,465	97%

City and County of Peterborough Accommodation Planning
 Concept E - Enrolment Projections

Norwood District HS Family of Schools																							
School	OTG (Capacity)	2023-2024 OCT 31 ADE		2024-2025 1-YR Projection		2025-2026 2-YR Projection		2026-2027 3-YR Projection		2027-2028 4-YR Projection		2028-2029 5-YR Projection		2029-2030 6-YR Projection		2030-2031 7-YR Projection		2031-2032 8-YR Projection		2032-2033 9-YR Projection		2033-2034 10-YR Projection	
		Students	Utilization	Students	Utilization	Students	Utilization	Students	Utilization	Students	Utilization	Students	Utilization	Students	Utilization	Students	Utilization	Students	Utilization	Students	Utilization	Students	Utilization
Norwood District HS (9-12)	429	285	66%	280	65%	303	71%	314	73%	311	72%	318	74%	335	78%	348	81%	354	83%	367	86%	372	87%
Norwood District IS (7-8)	138	133	96%	127	92%	138	100%	145	105%	149	108%	150	109%	153	111%	168	122%	174	126%	169	122%	179	130%
Total in Physical Building	567	418	74%	407	72%	441	78%	459	81%	460	81%	468	83%	488	86%	516	91%	528	93%	536	95%	551	97%
Havelock Belmont PS (JK-6)	257	215	84%	212	82%	207	81%	210	82%	213	83%	215	84%	223	87%	225	88%	227	88%	226	88%	221	86%
Norwood District PS (JK-6)	323	328	102%	341	106%	356	110%	356	110%	372	115%	386	120%	404	125%	404	125%	417	129%	429	133%	430	133%
Total	1,147	961	84%	960	84%	1,004	88%	1,025	89%	1,045	91%	1,069	93%	1,115	97%	1,145	100%	1,172	102%	1,191	104%	1,202	105%

Thomas A. Stewart SS Family of Schools																							
School	OTG (Capacity)	2023-2024 OCT 31 ADE		2024-2025 1-YR Projection		2025-2026 2-YR Projection		2026-2027 3-YR Projection		2027-2028 4-YR Projection		2028-2029 5-YR Projection		2029-2030 6-YR Projection		2030-2031 7-YR Projection		2031-2032 8-YR Projection		2032-2033 9-YR Projection		2033-2034 10-YR Projection	
		Students	Utilization	Students	Utilization	Students	Utilization	Students	Utilization	Students	Utilization	Students	Utilization	Students	Utilization	Students	Utilization	Students	Utilization	Students	Utilization	Students	Utilization
Thomas A. Stewart SS (9-12)	1,290	1,282	99%	1,300	101%	1,327	103%	1,326	103%	1,358	105%	1,362	106%	1,348	104%	1,371	106%	1,382	107%	1,413	110%	1,429	111%
Apsley PS (JK-8)	141	171	121%	173	123%	178	126%	188	133%	180	128%	174	123%	159	113%	162	115%	158	112%	150	106%	147	104%
Buckhorn PS (JK-6)	118	165	140%	172	146%	185	157%	203	172%	208	176%	214	181%	230	195%	236	200%	239	203%	243	206%	247	209%
Kaawaate East City PS (JK-6, FI SK-6)	675	784	116%	816	121%	760	113%	707	105%	723	107%	733	109%	721	107%	724	107%	723	107%	712	105%	711	105%
Lakefield District PS (JK-8, FI SK-8)	678	674	99%	685	101%	692	102%	707	104%	717	106%	731	108%	721	106%	723	107%	729	108%	740	109%	748	110%
North Shore PS (JK-8)	441	394	89%	399	90%	391	89%	401	91%	391	89%	397	90%	402	91%	406	92%	407	92%	400	91%	406	92%
Warsaw PS (JK-8)	187	142	76%	132	71%	138	74%	140	75%	143	76%	144	77%	149	80%	150	80%	146	78%	147	79%	150	80%
Total	3,530	3,612	102%	3,677	104%	3,671	104%	3,672	104%	3,720	105%	3,755	106%	3,730	106%	3,772	107%	3,784	107%	3,805	108%	3,838	109%

City and County of Peterborough Transportation Cost Analysis

***Enrolment numbers are listed below the school names in column B as average students in a grade cohort / newly bussed students)*
 Small vehicle capacity ~ 20 students - \$53,000
 Large vehicle capacity ~ 46 students - \$78,500

Concept E

	2024-2025	2025-2026	2026-2027	2027-2028	2028-2029	2029-2030	2030-2031
<p>Transition Plan Transportation (52)</p> <p>Kaawaate East City PS to Otonabee Valley PS (52/21)</p>	n/a	<p>Grade 7's attend Otonabee Valley PS (52) 52 students being transported to Otonabee Valley PS. 31 would have been previously bussed. 21 new bussers. Assume in Year 1, a large bus is required \$78,500</p>	<p>Grade 7- 8's attend Otonabee Valley PS (101) Year 2 would have 101 students being transported to Otonabee Valley PS. 62 would have been previously bussed. 42 new bussers. Assume in Year 2, a second large bus is required \$78,500</p>	For year 3 and beyond, assume the reduction of 62 bussed students from Kaawaate East City PS releases a large and small bus from the transportation network that is reallocated to Otonabee Valley PS. Therefore, no future transportation costs are calculated.	For year 3 and beyond, assume the reduction of 62 bussed students from Kaawaate East City PS releases a large and small bus from the transportation network that is reallocated to Otonabee Valley PS. Therefore, no future transportation costs are calculated.	For year 3 and beyond, assume the reduction of 62 bussed students from Kaawaate East City PS releases a large and small bus from the transportation network that is reallocated to Otonabee Valley PS. Therefore, no future transportation costs are calculated.	For year 3 and beyond, assume the reduction of 62 bussed students from Kaawaate East City PS releases a large and small bus from the transportation network that is reallocated to Otonabee Valley PS. Therefore, no future transportation costs are calculated.
<p>Transition Plan (0) Transportation</p> <p>North Shore PS FI to Prince of Wales PS (30/0)</p>	n/a	<p>SK students start FI at Prince of Wales PS Do not anticipate additional transportation costs, as routes will be designed to include these students on existing runs</p>	<p>SK - Grade 1 FI at Prince of Wales PS Do not anticipate additional transportation costs, as routes will be designed to include these students on existing runs</p>	<p>SK - Grade 2 FI at Prince of Wales PS Do not anticipate additional transportation costs, as routes will be designed to include these students on existing runs</p>	<p>SK - Grade 3 FI at Prince of Wales PS Do not anticipate additional transportation costs, as routes will be designed to include these students on existing runs</p>	<p>SK - Grade 4 FI at Prince of Wales PS Do not anticipate additional transportation costs, as routes will be designed to include these students on existing runs</p>	<p>SK - Grade 5 FI at Prince of Wales PS Do not anticipate additional transportation costs, as routes will be designed to include these students on existing runs</p>
<p>Transition Plan Transportation (17)</p> <p>Highland Heights PS to Crestwood Intermediate/Secondary (27/17)</p>	n/a	<p>Grade 7's attend Crestwood Intermediate (27) In year 1, there will be approximately 17 students on busses that wouldn't have otherwise been. 1 small vehicle required \$53,000</p>	<p>Grades 7 & 8 attend Crestwood Intermediate (49) In year 2, there will be approximately 34 students on busses that wouldn't have otherwise been. 1 large vehicle required offset by the small vehicle added in the PY (only 1 vehicle is needed) \$78,500 - \$53,000 = \$25,500 incremental cost</p>	<p>Grades 7-9 attend Crestwood (76) In year 3, there will be approximately 51 students on busses that wouldn't have otherwise been. 1 large vehicle required. Should be able to fit on existing bus implemented in Year 2. No additional cost incurred.</p>	<p>Grades 7-10 attend Crestwood (106) In year 4 and beyond, bus routes can be redesigned to move the Adam Scott runs to Crestwood that serviced this school. Should not anticipate any further costs for transportation.</p>	<p>Grades 7-11 attend Crestwood (140) In year 4 and beyond, bus routes can be redesigned to move the Adam Scott runs to Crestwood that serviced this school. Should not anticipate any further costs for transportation.</p>	<p>Grades 7-12 attend Crestwood (174) In year 4 and beyond, bus routes can be redesigned to move the Adam Scott runs to Crestwood that serviced this school. Should not anticipate any further costs for transportation.</p>
<p>Transition Plan Transportation (16)</p> <p>Intermediate School - Relocation of Grade 7 and 8s (Edmison Heights PS (24/10), R.F. Downey PS (34/21) to Queen Mary PS</p>	n/a	<p>Grade 7's attend Queen Mary PS In year 1, there will be approximately 16 students on busses that wouldn't have otherwise been. 1 small vehicle required \$53,000</p>	<p>Grade 7 & 8's attend Queen Mary PS In year 2, there will be approximately 31 students on busses that wouldn't have otherwise been. 1 large vehicle required offset by the small vehicle added in the PY (only 1 vehicle is needed) \$78,500 - \$53,000 = \$25,500 incremental cost</p>	n/a	n/a	n/a	n/a
<p>Transition Plan Transportation (3)</p> <p>Intermediate School - Boundary Adjustment between Queen Mary PS and Queen Elizabeth PS (72/31)</p>	n/a	<p>New registrations attend Queen Elizabeth PS In year 1, there will be approximately 3 junior kindergarten students that would walk to school that would have otherwise been bussed to school. Numbers too low to represent a significant change in bussing.</p>	<p>New registrations attend Queen Elizabeth PS In year 2, there will be approximately 6 junior kindergarten students that would walk to school that would have otherwise been bussed to school. Numbers too low to represent a significant change in bussing.</p>	<p>New registrations attend Queen Elizabeth PS In year 3, there will be approximately 9 junior kindergarten students that would walk to school that would have otherwise been bussed to school. Numbers too low to represent a significant change in bussing.</p>	<p>New registrations attend Queen Elizabeth PS In year 4, there will be approximately 12 junior kindergarten students that would walk to school that would have otherwise been bussed to school. Numbers are now over half a small vehicle. Transportation network can be adjusted to find savings. \$53,000 x 0.5 = \$26,500 SAVINGS</p>	<p>New registrations attend Queen Elizabeth PS In year 5, there will be approximately 15 junior kindergarten students that would walk to school that would have otherwise been bussed to school. Same savings as prior year.</p>	<p>New registrations attend Queen Elizabeth PS In year 6, there will be approximately 18 junior kindergarten students that would walk to school that would have otherwise been bussed to school. Numbers now almost fill a small vehicle. Transportation network can be adjusted to find savings for a small vehicle, offset by half savings in year 4. \$53,000 x 0.5 = \$26,500 Incremental SAVINGS</p>

**Within the proposed boundary adjustment, there are 72 students who would be impacted. But, as the boundary adjustment applies to new registrations only, Junior Kindergarten projection data was used to calculate anticipated transportation costs.*

**City and County of Peterborough Accommodation Planning
Concept A.2**

Adam Scott Collegiate Vocational Institute Family of Schools	
SCHOOL	IMPACT
Chemong Public School (PS)	<p>Would become part of Crestwood Secondary School (SS) family of schools.</p> <p>Students would attend Crestwood SS for Grades 9 to 12, with Grade 8 students from Chemong PS starting in Grade 9 at Crestwood SS in September 2027.</p> <p>Students from Chemong PS would attend Westmount PS for Senior Kindergarten (SK) to Grade 6 and Adam Scott Intermediate School for Grades 7 to 8 for French Immersion, with SK students starting at Westmount PS in September 2025. Existing French Immersion students may remain at Edmison Heights PS.</p>
Highland Heights PS	<p>A holding area would need to be established in Phase 2 of the Nature's Edge (Lily Lake Road) residential development. Elementary registrations from the designated holding area would attend Queen Mary PS for Junior Kindergarten (JK) to Grade 8.</p> <p>Secondary registrations would attend Kenner Collegiate Vocational Institute (CVI) for Grades 9 to 12. Students would attend these schools until such time as a new school or school addition is built in the community, or all or a portion of a holding area can be incorporated into the existing home school.</p>

Crestwood Secondary School Family of Schools	
SCHOOL	IMPACT
Millbrook/South Cavan PS	<p>Would become part of Kenner CVI family of schools.</p> <p>Students would attend Kenner Intermediate School and Kenner CVI for Grades 7 to 12, with Grade 7 students from Millbrook/South Cavan PS attending Kenner Intermediate School starting in September 2025.</p> <p>French Immersion students from Millbrook/South Cavan PS would attend Prince of Wales for SK to Grade 8, with SK students starting at Prince of Wales PS in September 2025. Existing French Immersion students may remain at Westmount PS/Adam Scott Intermediate School.</p>

City and County of Peterborough Accommodation Planning
Concept A.2

Kenner Collegiate Vocational Institute Family of Schools	
SCHOOL	IMPACT
Keith Wightman PS	Would become a JK to Grade 8 school, feeding directly into Kenner CVI for Grade 9, with Grade 7 students remaining at Keith Wightman PS starting in September 2025.
Otonabee Valley PS	<p>Would become a JK to Grade 8 school, feeding directly into Kenner CVI for Grade 9, with Grade 7 students remaining at Otonabee Valley PS starting in September 2025.</p> <p>Grade 7 and 8 students from Kaawaate East City PS would attend Otonabee Valley PS, with Grade 7 students from Kaawaate East City PS starting in Grade 7 at Otonabee Valley PS in September 2025.</p>
Roger Neilson PS	Would become a JK to Grade 8 school, feeding directly into Kenner CVI for Grade 9, with Grade 7 students remaining at Roger Neilson PS starting in September 2025.

Norwood District High School Family of Schools	
SCHOOL	IMPACT
Havelock Belmont PS	<p>French Immersion students from within Havelock Belmont PS boundary would attend Hillcrest PS and then Campbellford District High School (HS), with SK students starting at Hillcrest PS in September 2025. Existing French Immersion students may remain at Kaawaate East City PS/Adam Scott Intermediate School/Adam Scott CVI.</p> <p>No change to English stream students.</p>
Norwood District PS	<p>French Immersion students from within Norwood District PS boundary would attend Hillcrest PS and then Campbellford District HS, with SK students starting at Hillcrest PS in September 2025. Existing French Immersion students may remain at Kaawaate East City PS/Adam Scott Intermediate School/Adam Scott CVI.</p> <p>No change to English stream students.</p>

**City and County of Peterborough Accommodation Planning
Concept A.2**

Thomas A. Stewart Secondary School Family of Schools	
SCHOOL	IMPACT
Kaawaate East City PS	<p>Kaawaate East City PS would become dual-track JK/SK to Grade 6. Students would attend Otonabee Valley PS for Grades 7 to 8, with Grade 7 students from Kaawaate East City PS starting in Grade 7 at Otonabee Valley PS in September 2025. Kaawaate East City PS students would continue to attend Thomas A. Stewart SS for Grades 9 to 12. Grade 7 and 8 French Immersion students would continue to attend Adam Scott Intermediate School and Adam Scott CVI.</p>
North Shore PS	<p>French Immersion students who attend Westmount PS and reside in the area generally described as being bounded by the 6th Line and the Otonabee River to the north, the Otonabee River to the east, Rice Lake to the south, and Highway 28 to the west of the North Shore PS school boundary would attend Prince of Wales PS for French Immersion. SK students would start at Prince of Wales PS in September 2025. Existing French Immersion students may remain at Westmount PS/Adam Scott Intermediate School.</p> <p>French Immersion students who attend Kaawaate East City PS and reside in the area generally described as being bounded by Highway 7 and Division Road to the north, Cameron Line to the east, Rice Lake to the south and the Otonabee River to the west would attend Prince of Wales PS for French Immersion. SK students would start at Prince of Wales PS in September 2025. Existing French Immersion students may remain at Kaawaate East City PS/Adam Scott Intermediate School.</p> <p>No boundary change for English stream students.</p>

City and County of Peterborough Accommodation Planning
 Concept A.2 – Enrolment Projections

Adam Scott CVI Family of Schools																							
School	OTG (Capacity)	2023-2024 OCT 31 ADE		2024-2025 1-YR Projection		2025-2026 2-YR Projection		2026-2027 3-YR Projection		2027-2028 4-YR Projection		2028-2029 5-YR Projection		2029-2030 6-YR Projection		2030-2031 7-YR Projection		2031-2032 8-YR Projection		2032-2033 9-YR Projection		2033-2034 10-YR Projection	
		Students	Utilization	Students	Utilization	Students	Utilization	Students	Utilization	Students	Utilization	Students	Utilization	Students	Utilization	Students	Utilization	Students	Utilization	Students	Utilization	Students	Utilization
Adam Scott CVI (9-12, FI 9-12)*	1,017	993	98%	1,017	100%	1011	99%	1,049	103%	1,020	100%	1009	99%	981	96%	942	93%	941	93%	923	91%	904	89%
Adam Scott IS (7-8, FI 7-8)	225	298	132%	320	142%	338	150%	344	153%	328	146%	343	152%	352	156%	323	144%	304	135%	321	143%	335	149%
Total in Physical Building	1,242	1,291	104%	1,337	108%	1,349	109%	1,393	112%	1,348	109%	1,352	109%	1,333	107%	1,265	102%	1,245	100%	1,244	100%	1,239	100%
Edmison Heights PS (JK-6, FI SK-6)	432	546	126%	531	123%	516	119%	504	117%	491	114%	477	110%	469	109%	465	108%	472	109%	466	108%	456	106%
Highland Heights PS (JK-8)*	300	211	70%	244	81%	259	86%	286	95%	299	100%	322	107%	326	109%	330	110%	330	110%	332	111%	335	112%
Queen Elizabeth PS (JK-8)	295	220	75%	210	71%	192	65%	188	64%	180	61%	180	61%	184	62%	182	62%	177	60%	173	59%	180	61%
Queen Mary PS (JK-8)**	421	363	86%	370	88%	360	86%	352	84%	335	80%	333	79%	342	81%	342	81%	352	84%	368	87%	376	89%
R.F. Downey PS (JK-6)	222	265	119%	264	119%	275	124%	270	122%	275	124%	273	123%	275	124%	275	124%	277	125%	271	122%	265	119%
Total	2,912	2,896	99%	2,956	102%	2,951	101%	2,993	103%	2,928	101%	2,937	101%	2,929	101%	2,859	98%	2,853	98%	2,854	98%	2,851	98%

* Anticipated student yield from Phase 1 of Nature's Edge (Lily Lake Road) Development has been incorporated into the Adam Scott CVI and Highland Heights PS enrolment projections.

** Anticipated student yield from Phase 2 of Nature's Edge (Lily Lake Road) Development has been incorporated into the potential holding schools (i.e., Kenner CVI and Queen Mary PS enrolment projections commencing in 2028-2029).

Crestwood SS Family of Schools																							
School	OTG (Capacity)	2023-2024 OCT 31 ADE		2024-2025 1-YR Projection		2025-2026 2-YR Projection		2026-2027 3-YR Projection		2027-2028 4-YR Projection		2028-2029 5-YR Projection		2029-2030 6-YR Projection		2030-2031 7-YR Projection		2031-2032 8-YR Projection		2032-2033 9-YR Projection		2033-2034 10-YR Projection	
		Students	Utilization	Students	Utilization	Students	Utilization	Students	Utilization	Students	Utilization	Students	Utilization	Students	Utilization	Students	Utilization	Students	Utilization	Students	Utilization	Students	Utilization
Crestwood SS (9-12)	765	737	96%	732	96%	752	98%	755	99%	774	101%	787	103%	789	103%	774	101%	757	99%	732	96%	743	97%
Crestwood IS (7-8)	184	271	147%	294	160%	266	145%	206	112%	187	102%	175	95%	172	93%	163	89%	171	93%	176	96%	179	97%
Total in Physical Building	949	1,008	106%	1,026	108%	1,018	107%	961	101%	961	101%	962	101%	961	101%	937	99%	928	98%	908	96%	922	97%
Chemong PS (JK-8)	501	444	89%	455	91%	450	90%	442	88%	435	87%	423	84%	418	83%	403	80%	393	78%	392	78%	404	81%
James Strath PS (JK-8)	714	616	86%	617	86%	608	85%	601	84%	616	86%	615	86%	604	85%	604	85%	599	84%	610	85%	602	84%
Kawartha Heights PS (JK-6)	268	248	93%	241	90%	228	85%	232	87%	235	88%	252	94%	255	95%	263	98%	269	100%	279	104%	280	104%
North Cavan PS (JK-6)	130	210	162%	211	162%	214	165%	201	155%	201	155%	191	147%	197	152%	203	156%	193	148%	198	152%	189	145%
Westmount PS (JK-6, FI SK-6)	562	510	91%	496	88%	483	86%	474	84%	463	82%	463	82%	459	82%	468	83%	466	83%	470	84%	478	85%
Total	3,124	3,036	97%	3,046	98%	3,001	96%	2,911	93%	2,911	93%	2,906	93%	2,894	93%	2,878	92%	2,848	91%	2,857	91%	2,875	92%

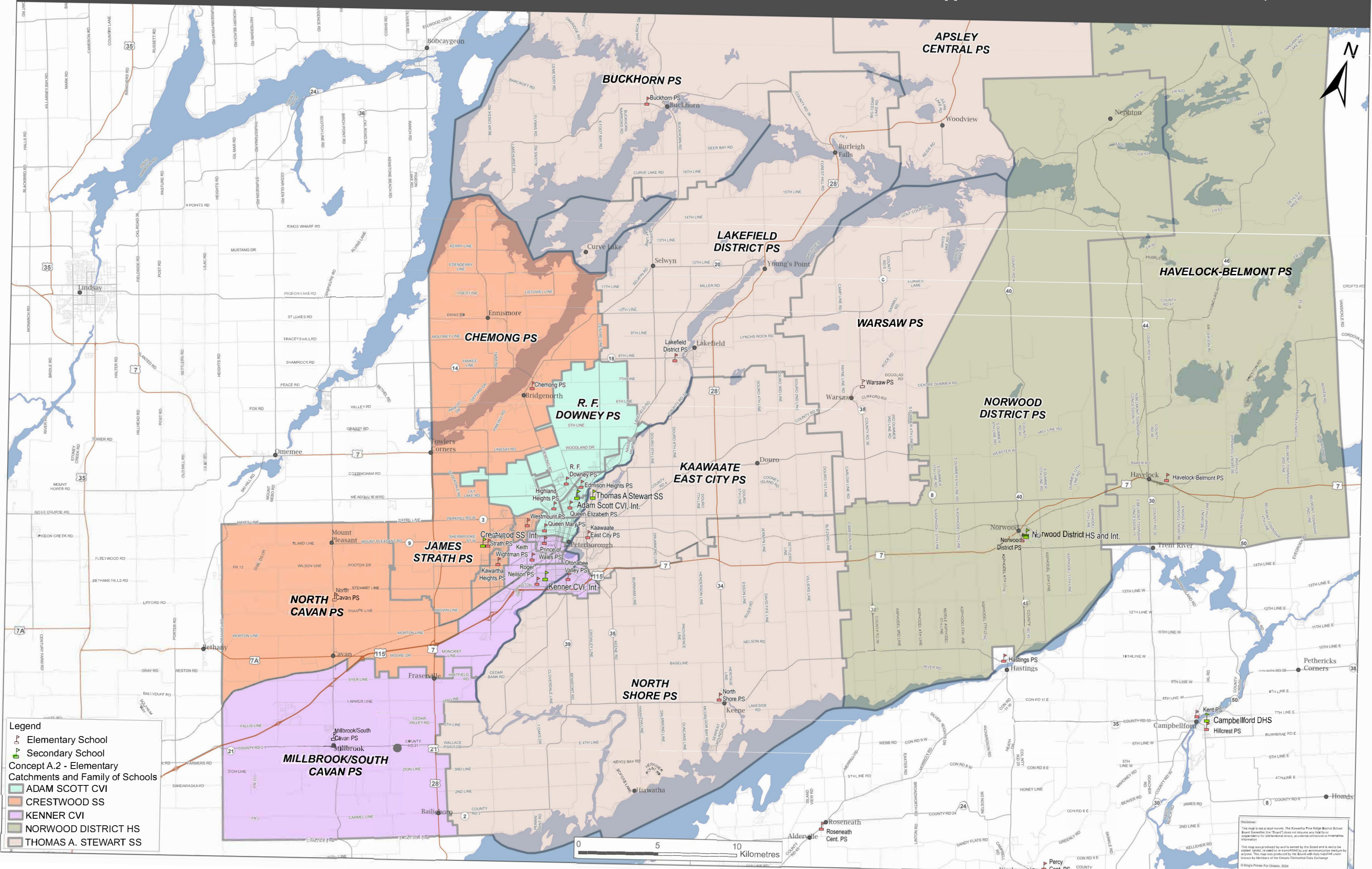
Kenner CVI Family of Schools																							
School	OTG (Capacity)	2023-2024 OCT 31 ADE		2024-2025 1-YR Projection		2025-2026 2-YR Projection		2026-2027 3-YR Projection		2027-2028 4-YR Projection		2028-2029 5-YR Projection		2029-2030 6-YR Projection		2030-2031 7-YR Projection		2031-2032 8-YR Projection		2032-2033 9-YR Projection		2033-2034 10-YR Projection	
		Students	Utilization	Students	Utilization	Students	Utilization	Students	Utilization	Students	Utilization	Students	Utilization	Students	Utilization	Students	Utilization	Students	Utilization	Students	Utilization	Students	Utilization
Kenner CVI (9-12)**	918	570	62%	580	63%	519	57%	482	53%	504	55%	562	61%	649	71%	717	78%	734	80%	754	82%	757	82%
Kenner IS (7-8)	306	161	53%	173	57%	148	48%	137	45%	149	49%	156	51%	167	55%	169	55%	181	59%	170	56%	166	54%
Total in Physical Building	1,224	731	60%	753	62%	667	54%	619	51%	653	53%	718	59%	816	67%	886	72%	915	75%	924	75%	923	75%
Keith Wightman PS (JK-8)	353	238	67%	242	69%	298	84%	299	85%	291	82%	289	82%	290	82%	290	82%	286	81%	279	79%	276	78%
Millbrook/South Cavan PS (JK-6)	447	585	131%	599	134%	633	142%	644	144%	660	148%	669	150%	679	152%	682	153%	679	152%	693	155%	698	156%
Otonabee Valley PS (JK-8)	459	255	56%	251	55%	308	67%	358	78%	358	78%	354	77%	366	80%	376	82%	363	79%	368	80%	370	81%
Prince of Wales PS (JK-8, FI SK-8)	622	557	90%	553	89%	627	101%	603	97%	591	95%	585	94%	583	94%	593	95%	580	93%	573	92%	571	92%
Roger Neilson PS (JK-8)	338	250	74%	244	72%	312	92%	302	89%	299	88%	291	86%	292	86%	297	88%	296	88%	293	87%	296	88%
Total	3,443	2,616	76%	2,642	77%	2,845	83%	2,825	82%	2,852	83%	2,906	84%	3,026	88%	3,124	91%	3,119	91%	3,130	91%	3,134	91%

** Anticipated student yield from Phase 2 of Nature's Edge (Lily Lake Road) Development has been incorporated into the potential holding schools (i.e., Kenner CVI and Queen Mary PS enrolment projections commencing in 2028-2029).

City and County of Peterborough Accommodation Planning
 Concept A.2 – Enrolment Projections

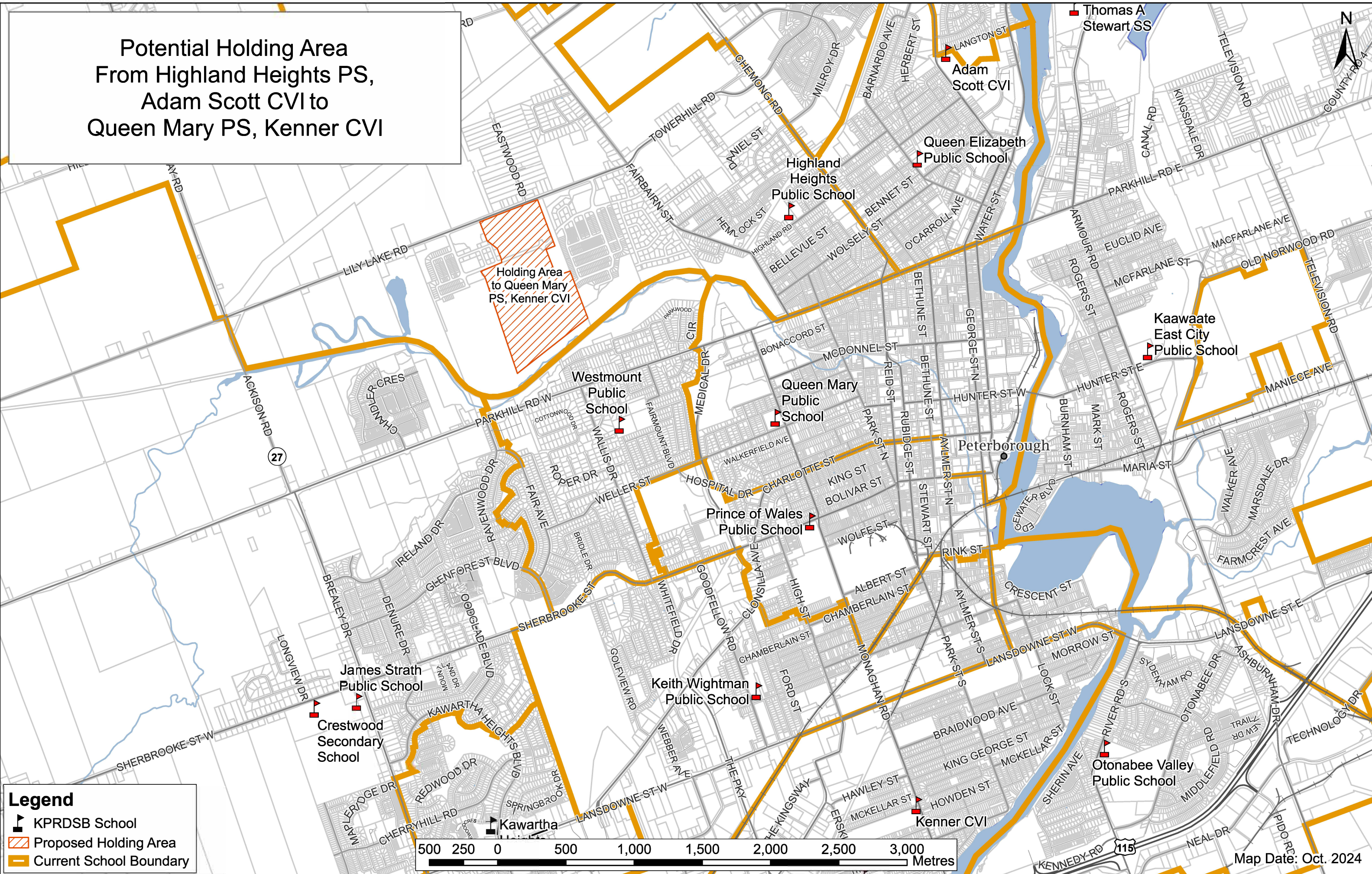
Norwood District HS Family of Schools																							
		2023-2024 OCT 31 ADE		2024-2025 1-YR Projection		2025-2026 2-YR Projection		2026-2027 3-YR Projection		2027-2028 4-YR Projection		2028-2029 5-YR Projection		2029-2030 6-YR Projection		2030-2031 7-YR Projection		2031-2032 8-YR Projection		2032-2033 9-YR Projection		2033-2034 10-YR Projection	
School	OTG (Capacity)	Students	Utilization	Students	Utilization	Students	Utilization	Students	Utilization	Students	Utilization	Students	Utilization	Students	Utilization	Students	Utilization	Students	Utilization	Students	Utilization	Students	Utilization
Norwood District HS (9-12)	429	285	66%	280	65%	303	71%	314	73%	311	72%	318	74%	335	78%	348	81%	354	83%	367	86%	372	87%
Norwood District IS (7-8)	138	133	96%	127	92%	138	100%	145	105%	149	108%	150	109%	153	111%	168	122%	174	126%	169	122%	179	130%
Total in Physical Building	567	418	74%	407	72%	441	78%	459	81%	460	81%	468	83%	488	86%	516	91%	528	93%	536	95%	551	97%
Havelock Belmont PS (JK-6)	257	215	84%	212	82%	207	81%	210	82%	213	83%	215	84%	223	87%	225	88%	227	88%	226	88%	221	86%
Norwood District PS (JK-6)	323	328	102%	341	106%	356	110%	356	110%	372	115%	386	120%	404	125%	404	125%	417	129%	429	133%	430	133%
Total	1,147	961	84%	960	84%	1,004	88%	1,025	89%	1,045	91%	1,069	93%	1,115	97%	1,145	100%	1,172	102%	1,191	104%	1,202	105%

Thomas A. Stewart SS Family of Schools																							
		2023-2024 OCT 31 ADE		2024-2025 1-YR Projection		2025-2026 2-YR Projection		2026-2027 3-YR Projection		2027-2028 4-YR Projection		2028-2029 5-YR Projection		2029-2030 6-YR Projection		2030-2031 7-YR Projection		2031-2032 8-YR Projection		2032-2033 9-YR Projection		2033-2034 10-YR Projection	
School	OTG (Capacity)	Students	Utilization	Students	Utilization	Students	Utilization	Students	Utilization	Students	Utilization	Students	Utilization	Students	Utilization	Students	Utilization	Students	Utilization	Students	Utilization	Students	Utilization
Thomas A. Stewart SS (9-12)	1,290	1,282	99%	1,300	101%	1,327	103%	1,326	103%	1,358	105%	1,362	106%	1,348	104%	1,371	106%	1,382	107%	1,413	110%	1,429	111%
Apsley PS (JK-8)	141	171	121%	173	123%	178	126%	188	133%	180	128%	174	123%	159	113%	162	115%	158	112%	150	106%	147	104%
Buckhorn PS (JK-6)	118	165	140%	172	146%	185	157%	203	172%	208	176%	214	181%	230	195%	236	200%	239	203%	243	206%	247	209%
Kaawaate East City PS (JK-6, FI SK-6)	675	784	116%	816	121%	760	113%	707	105%	723	107%	733	109%	721	107%	724	107%	723	107%	712	105%	711	105%
Lakefield District PS (JK-8, FI SK-8)	678	674	99%	685	101%	692	102%	707	104%	717	106%	731	108%	721	106%	723	107%	729	108%	740	109%	748	110%
North Shore PS (JK-8)	441	394	89%	399	90%	391	89%	401	91%	391	89%	397	90%	402	91%	406	92%	407	92%	400	91%	406	92%
Warsaw PS (JK-8)	187	142	76%	132	71%	138	74%	140	75%	143	76%	144	77%	149	80%	150	80%	146	78%	147	79%	150	80%
Total	3,530	3,612	102%	3,677	104%	3,671	104%	3,672	104%	3,720	105%	3,755	106%	3,730	106%	3,772	107%	3,784	107%	3,805	108%	3,838	109%



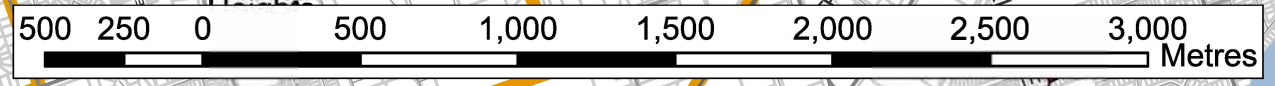
This map is not a legal survey. The Kawartha Pine Ridge Board of Education ("Board") does not assume any liability or responsibility for any errors, omissions or inaccuracies in this information. This map was produced by and is owned by the Board and is not to be copied, stored, or used in any manner without the written permission of the Board. © King's Printer For Ontario, 2024

Potential Holding Area From Highland Heights PS, Adam Scott CVI to Queen Mary PS, Kenner CVI



Legend

- KPRDSB School
- Proposed Holding Area
- Current School Boundary



City and County of Peterborough Transportation Cost Analysis

***Enrolment numbers are listed below the school names in column B as average students in a grade cohort / newly bussed students)*
 Small vehicle capacity ~ 20 students - \$53,000
 Large vehicle capacity ~ 46 students - \$78,500

Concept A.2

	2024-2025	2025-2026	2026-2027	2027-2028	2028-2029	2029-2030	2030-2031
<p>Millbrook/South Cavan Public School (PS) to Kenner Intermediate/Collegiate Vocational Institute (CVI) (64/0)</p> <p><i>Transition Plan (0) Transportation</i></p>	n/a	<p>Grade 7's attend Kenner Int. (64) 1 large bus required {64 students offset by existing large International Baccalaureate (IB) bus (27 seats available for 25-26)} \$78,500</p>	<p>Grades 7 & 8 attend Kenner Int. (150) 1 large bus required {86 new students offset by existing large IB bus (35 seats available for 26-27)} \$78,500</p>	<p>Grades 7-9 attend Kenner (225) In years 3 and beyond, do not anticipate any incremental transportation costs. As students graduate out from Crestwood Secondary School (SS), bus routes will be redesigned, and busses reallocated from Crestwood SS to Kenner CVI.</p>	<p>Grades 7-10 attend Kenner (314) In years 3 and beyond, do not anticipate any incremental transportation costs. As students graduate out from Crestwood SS, bus routes will be redesigned, and busses reallocated from Crestwood SS to Kenner CVI.</p>	<p>Grades 7-11 attend Kenner (392) In years 3 and beyond, do not anticipate any incremental transportation costs. As students graduate out from Crestwood SS, bus routes will be redesigned, and busses reallocated from Crestwood SS to Kenner CVI.</p>	<p>Grades 7-12 attend Kenner (480) In years 3 and beyond, do not anticipate any incremental transportation costs. As students graduate out from Crestwood SS, bus routes will be redesigned, and busses reallocated from Crestwood SS to Kenner CVI.</p>
<p>Keith Wightman PS (29/-16), Otonabee Valley PS (27/-20) and Roger Neilson PS (30/2) change to Junior Kindergarten (JK)-Grade 8 Schools (86/-34)</p> <p><i>Transition Plan Transportation (-34)</i></p>	n/a	<p>Grade 7's attend their home school (86) With keeping Grade 7 students at their home school, there is a reduction in the number of students on busses for Keith Wightman PS (down 16), Otonabee Valley PS (down 20), offset by an increase at Roger Neilson PS (up 2). Total reduction of 34. Year one savings would be at least one small vehicle. SAVE - \$53,000</p>	<p>Grade 7-8's attend their home school (177) With keeping Grade 7-8 students at their home school, there is a reduction in the number of students on busses for Keith Wightman PS (down 32), Otonabee Valley PS (down 40), offset by an increase at Roger Neilson PS (up 4). Total reduction of 72. Year two savings would be at least one large vehicle (on top of the small one saved in year one). SAVE - \$78,500</p>	n/a	n/a	n/a	n/a
<p>Havelock Belmont PS and Norwood District PS French Immersion (FI) to Hillcrest/Campbellford (18/0)</p> <p><i>Transition Plan (0) Transportation</i></p>	n/a	<p>Senior Kindergarten (SK) students start FI at Hillcrest PS Do not anticipate additional transportation costs, as routes will be designed to include these students on existing runs</p>	<p>SK students start FI at Hillcrest PS Do not anticipate additional transportation costs, as routes will be designed to include these students on existing runs</p>	<p>SK students start FI at Hillcrest PS Do not anticipate additional transportation costs, as routes will be designed to include these students on existing runs</p>	<p>SK students start FI at Hillcrest PS Do not anticipate additional transportation costs, as routes will be designed to include these students on existing runs</p>	<p>SK students start FI at Hillcrest PS Do not anticipate additional transportation costs, as routes will be designed to include these students on existing runs</p>	<p>SK students start FI at Hillcrest PS Do not anticipate additional transportation costs, as routes will be designed to include these students on existing runs</p>
<p>Kaawaate East City PS to Otonabee Valley PS (52/21)</p> <p><i>Transition Plan Transportation (52)</i></p>	n/a	<p>Grade 7's attend Otonabee Valley PS (52) 52 students being transported to Otonabee Valley PS. 31 would have been previously bussed. 21 new busses. Assume in Year 1, a large bus is required \$78,500</p>	<p>Grade 7- 8's attend Otonabee Valley PS (101) Year 2 would have 101 students being transported to Otonabee Valley PS. 62 would have been previously bussed. 42 new busses. Assume in Year 2, a second large bus is required \$78,500</p>	<p>For year 3 and beyond, assume the reduction of 62 bussed students from Kaawaate East City PS releases a large and small bus from the transportation network that is reallocated to Otonabee Valley PS. Therefore, no future transportation costs are calculated.</p>	<p>For year 3 and beyond, assume the reduction of 62 bussed students from Kaawaate East City PS releases a large and small bus from the transportation network that is reallocated to Otonabee Valley PS. Therefore, no future transportation costs are calculated.</p>	<p>For year 3 and beyond, assume the reduction of 62 bussed students from Kaawaate East City PS releases a large and small bus from the transportation network that is reallocated to Otonabee Valley PS. Therefore, no future transportation costs are calculated.</p>	<p>For year 3 and beyond, assume the reduction of 62 bussed students from Kaawaate East City PS releases a large and small bus from the transportation network that is reallocated to Otonabee Valley PS. Therefore, no future transportation costs are calculated.</p>

City and County of Peterborough Transportation Cost Analysis

***Enrolment numbers are listed below the school names in column B as average students in a grade cohort / newly bussed students)*
 Small vehicle capacity ~ 20 students - \$53,000
 Large vehicle capacity ~ 46 students - \$78,500

Concept A.2

	2024-2025	2025-2026	2026-2027	2027-2028	2028-2029	2029-2030	2030-2031
North Shore PS FI to Prince of Wales PS (30/0) Transition Plan (0) Transportation	n/a	SK students start FI at Prince of Wales PS Do not anticipate additional transportation costs, as routes will be designed to include these students on existing runs	SK - Grade 1 FI at Prince of Wales PS Do not anticipate additional transportation costs, as routes will be designed to include these students on existing runs	SK - Grade 2 FI at Prince of Wales PS Do not anticipate additional transportation costs, as routes will be designed to include these students on existing runs	SK - Grade 3 FI at Prince of Wales PS Do not anticipate additional transportation costs, as routes will be designed to include these students on existing runs	SK - Grade 4 FI at Prince of Wales PS Do not anticipate additional transportation costs, as routes will be designed to include these students on existing runs	SK - Grade 5 FI at Prince of Wales PS Do not anticipate additional transportation costs, as routes will be designed to include these students on existing runs
Chemong PS to Crestwood Secondary School (SS) (46/0) Transition Plan (0) Transportation	n/a	n/a	n/a	Grade 9's attend Crestwood SS (46) 1 large bus required {46 new students} \$78,500	Grades 9-10 attend Crestwood SS (98) 1 large bus required {52 new students} \$78,500	Grades 9-11 attend Crestwood SS (144) In years 3 and beyond, do not anticipate any incremental transportation costs for Chemong PS students going to Crestwood SS. As students graduate out from Adam Scott CVI, bus routes will be redesigned, and busses reallocated from Adam Scott CVI to Crestwood SS. 1 small vehicle will likely be needed to transport FI students from Chemong catchment to Adam Scott \$53,000	Grades 9-12 attend Crestwood SS (197) In years 3 and beyond, do not anticipate any incremental transportation costs. As students graduate out from Adam Scott CVI, bus routes will be redesigned, and busses reallocated from Adam Scott CVI to Crestwood SS.
Lily Lake Road Subdivision (Phase 2) to Queen Mary PS and Kenner CVI Transition Plan Transportation	n/a	n/a	n/a	n/a	All registrations to Queen Mary PS or Kenner CVI* Anticipated Elementary Students - 14 Anticipated Secondary Students - 8 Approximately 22 students requiring transportation. Would require a small bus \$53,000	All registrations to Queen Mary PS or Kenner CVI* Anticipated Elementary Students - 28 Anticipated Secondary Students - 16 Approximately 44 students requiring transportation. Would require a large bus. This would replace the small one implemented in Year 1, therefore the incremental cost is \$25,500.	All registrations to Queen Mary PS or Kenner CVI* Anticipated Elementary Students - 42 Anticipated Secondary Students - 24 Approximately 66 students requiring transportation. Would require a large bus and a small bus. The incremental cost is \$53,000.

* - Note that Phase 2 of the Nature's Edge (Lily Lake Road) development is anticipated to have occupants beginning in 2028-2029.