



KAWARTHA PINE RIDGE
DISTRICT SCHOOL BOARD

Consultation Resource:

Student Accommodation Review
Elementary Family of Schools -
Port Hope High School
Background Study and Options

2022-2023

A decorative graphic at the bottom of the page consists of several overlapping, wavy lines in purple, blue, orange, green, and yellow, curving upwards from left to right.

This background study and scenarios for consideration were developed to inform discussion as part of the Student Accommodation Review: Elementary Family of Schools – Port Hope High School.

Background

- Ganaraska Trail Public School (PS) is experiencing greater than anticipated accommodation pressures.
- In September 2022, the Grade 6 students from Ganaraska Trail PS transitioned to Dr. M.S. Hawkins Senior PS to alleviate accommodation pressure being felt at Ganaraska Trail PS.
- A review of this Family of Schools (FOS) is being conducted in order to identify a sustainable solution to the accommodation pressures being felt.
- Planning Services staff have completed some preliminary analysis focusing on capacity and space limitations at Ganaraska Trail PS. To identify a sustainable solution, staff have proposed several options, which include program, grade cohort and/or boundary changes involving all the elementary schools within the EFOS, which will be presented within this background study.

Context

- Concentrated growth in the Port Hope area and an increase in enrolment in the French Immersion program has put greater pressure on the available space at Ganaraska Trail PS.
- The Board anticipates this trend to continue over the next 10 years.
- To respond to the increased accommodation pressures, several strategies should be considered:
 - the use of additional portables,
 - boundary adjustments,
 - change in grade cohorts/program delivery between available facilities, and
 - the establishment of holding areas.

Development Pressures

- Population Growth in Northumberland County:
 - Provincial forecasts indicate that the population for Northumberland County will grow to 122,000 people by 2051. This represents an increase of approximately 34,400 persons.
 - The Town of Cobourg and the Municipality of Port Hope are expected to account for more than half the County's overall population growth.
 - The Growth Study indicated that Port Hope will need to expand its urban boundary to accommodate the anticipated growth.
 - It is anticipated that a large component of housing growth will include low-density housing, which tends to generate more students.

- On-going and planned residential developments (refer to Figure 1):
 - Within the current Ganaraska Trail PS catchment area there are a few approved or planned residential developments, which are anticipated to generate approximately 59 elementary students and 47 secondary students over the next 5-10 years.
 - Within the Beatrice Strong PS catchment area there are two planned developments, which total 38 medium density residential units (i.e., townhomes). It is anticipated these developments will generate 3 elementary students.
 - Within the North Hope Central PS catchment area there are two planned developments, which total 63 low density residential units. It is anticipated these developments will generate 12 elementary students and 10 secondary students.

At A Glance: Port Hope Development Activity

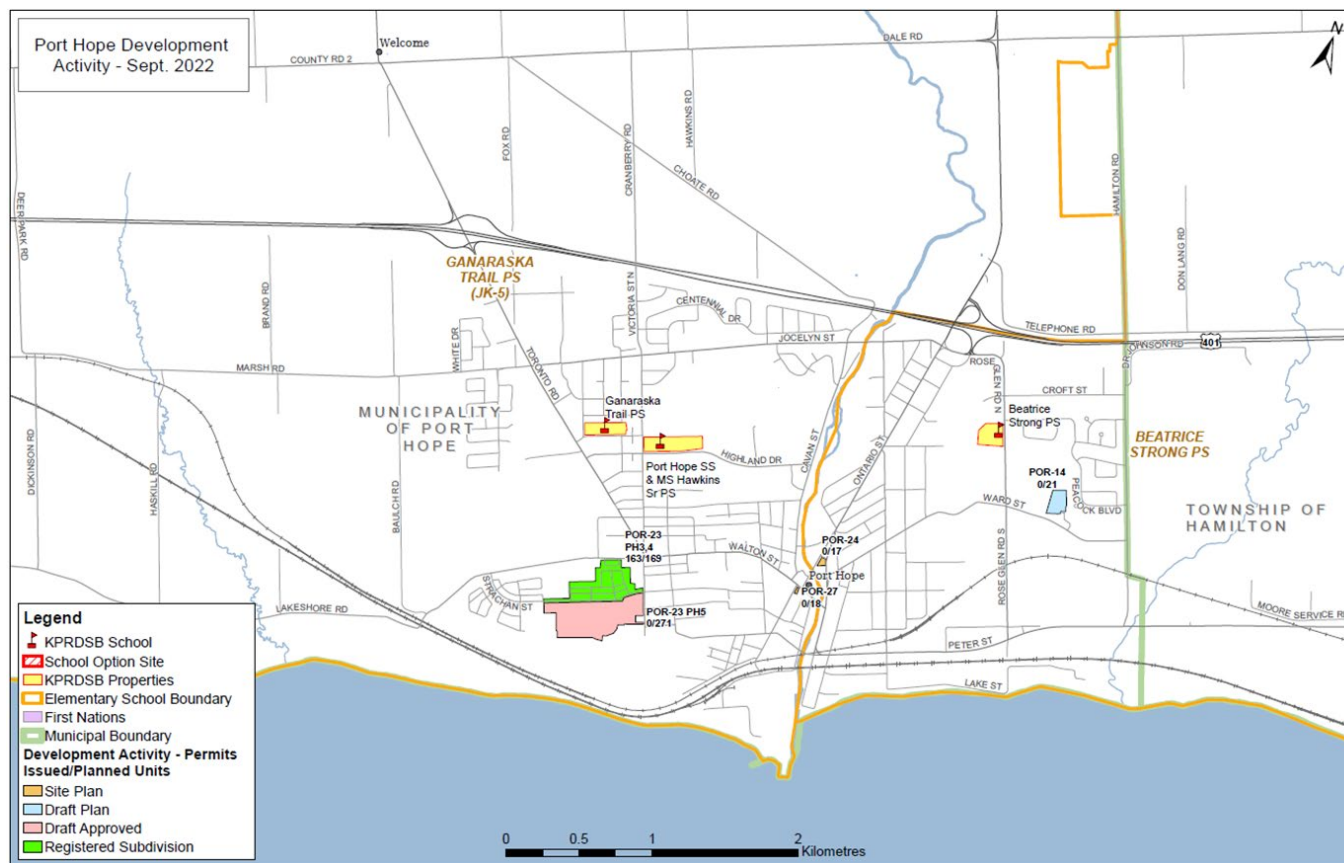


Figure 1: Residential Development Activity, Port Hope

Trustee and Community Engagement

Several options are being presented within this background report for trustee and community feedback. Feedback will be collected through engagement meeting(s), on-line forms and written forms. Staff will review and summarize community feedback and identify preferred options. A final report will be produced with a summary of the engagement process, community feedback and preferred options for final approval by the Board of Trustees in February, 2023.

Option A: Remain Status Quo

School	OTG Capacity	Portables (2022-23)	2022-23 Current Enrolment		2023-24 1-YR Projection		2027-28 5-YR Projection		2032-33 10-YR Projection	
			Students	Utilization	Students	Utilization	Students	Utilization	Students	Utilization
Beatrice Strong PS (JK-6)	349	0	222	64%	219	63%	215	62%	204	58%
Ganaraska Trail PS (JK-5)	504	1	265	105%	275	104%	313	108%	312	104%
Ganaraska Trail PS (FI SK-5)			264		250		233		211	
Ganaraska Trail PS Total Enrolment			529		525		546		523	
North Hope Central PS (JK-6)	95	2	118	124%	122	128%	119	125%	115	121%
Dr. M.S. Hawkins Senior PS (6-8)	216	0	181	125%	195	130%	201	122%	222	132%
Dr. M.S. Hawkins Senior PS (FI 6-8)			88		85		62		63	
Dr. M.S. Hawkins Senior PS Total Enrolment			269		280		263		285	
Total Enrolment @ Port Hope HS	951	0	493	52%	518	54%	504	53%	561	59%

Beatrice Strong PS

- Presently Beatrice Strong PS is a JK to grade 6 school.
- Beatrice Strong PS is projected to maintain a steady enrolment; and the school will remain significantly underutilized during the 10-year projection period.

Ganaraska Trail PS

- Presently Ganaraska Trail PS is a dual track JK to grade 5 school.
- Ganaraska Trail PS's enrolment is expected to slightly exceed the schools OTG (capacity).
- Accommodation pressure is enhanced due to the French Immersion program, as additional classroom space is required to accommodate the FI classes.
- Accommodation pressures cannot be effectively managed via portables at this site.

North Hope Central PS

- Presently North Hope Central PS is a JK to 6 school.
- North Hope Central PS is projected to maintain a steady enrolment slightly above the schools OTG (capacity).
- Accommodation pressures can be managed via portables at this site.

Dr. M.S. Hawkins Senior PS

- Presently Dr. M.S. Hawkins Senior PS is a dual track grade 6 to 8 school, situated within the physical building, Port Hope HS.
- Ganaraska Trail PS, Beatrice Strong PS and North Hope Central PS feed into Dr. M.S. Hawkins Senior PS, with Dr. M.S. Hawkins Senior PS feeding into Port Hope HS.
- The physical building, Port Hope HS, can accommodate additional classrooms dedicated to Dr. M.S. Hawkins Senior PS to assist in managing the enrolment pressure in this family of schools.

Option B: Change in grade cohort between Ganaraska Trail PS and Dr. M.S. Hawkins Senior PS

School	OTG Capacity	Portables (2022-23)	2022-23 Current Enrolment		2023-24 1-YR Projection		2027-28 5-YR Projection		2032-33 10-YR Projection	
			Students	Utilization	Students	Utilization	Students	Utilization	Students	Utilization
Ganaraska Trail PS (JK-4)	504	1	265	105%	238	91%	269	93%	266	90%
Ganaraska Trail PS (FI SK-4)			264		223		198		188	
Ganaraska Trail PS - Total Enrolment			529		461		467		454	
Dr. M.S. Hawkins Senior PS (5-8)	216	0	181	125%	232	159%	245	162%	268	164%
Dr. M.S. Hawkins Senior PS (FI 5-8)			88		112		104		86	
Dr. M.S. Hawkins Senior PS - Total Enrolment			269		344		349		354	
Total Enrolment @ Port Hope HS	951	0	493	67%	582	79%	590	80%	630	66%

Beatrice Strong PS

- Beatrice Strong PS remains status quo.
- Underutilization of Beatrice Strong PS is not addressed in this option.

Ganaraska Trail PS

- Ganaraska Trail PS becomes a dual track JK/SK to grade 4 school.
- In this option there is a stabilization of enrolment at Ganaraska Trail PS, and there would be residual capacity for students generated from the impending residential development within the Ganaraska Trail PS catchment.

North Hope Central PS

- North Hope Central PS remains status quo as a JK to grade 6 school.
- North Hope Central PS is projected to maintain a steady enrolment slightly above the schools OTG (capacity).
- Accommodation pressures can be managed via portables at this site.

Dr. M.S. Hawkins Senior PS

- Dr. M.S. Hawkins Senior PS becomes a dual track grade 5 to 8 school.
- The physical building, Port Hope HS, can accommodate additional classrooms dedicated to Dr. M.S. Hawkins Senior PS.

Option C: Change in grade cohort between Ganaraska Trail PS and Dr. M.S. Hawkins Senior PS

School	OTG Capacity	Portables (2022-23)	2022-23 Current Enrolment		2023-24 1-YR Projection		2027-28 5-YR Projection		2032-33 10-YR Projection	
			Students	Utilization	Students	Utilization	Students	Utilization	Students	Utilization
Ganaraska Trail PS (JK-3)	504	1			204		221		266	
Ganaraska Trail PS (FI SK-3)				105%	195	79%	158	75%	188	90%
Ganaraska Trail PS - Total Enrolment			529	399	379	454				
Dr. M.S. Hawkins Senior PS (4-8)	216	0			266		293		313	
Dr. M.S. Hawkins Senior PS (FI 4-8)				125%	140	188%	137	199%	117	199%
Dr. M.S. Hawkins Senior PS - Total Enrolment			269	406	430	430				
Total @ Port Hope HS	951	0	493	52%	628	66%	653	69%	684	72%

Beatrice Strong PS

- Beatrice Strong PS remains status quo as a JK to grade 6.
- Underutilization of Beatrice Strong PS is not addressed in this option.

Ganaraska Trail PS

- Ganaraska Trail PS becomes a dual track JK/SK to grade 3 school.
- In this option there is a stabilization of enrolment at Ganaraska Trail PS, and there would be residual capacity for students generated from the impending residential development within the Ganaraska Trail PS catchment.

North Hope Central PS

- North Hope Central PS remains status quo as a JK to grade 6 school.

Dr. M.S. Hawkins Senior PS

- Dr. M.S. Hawkins Senior PS becomes dual track grade 4 to 8 school.
- The physical building, Port Hope HS, may not be able to accommodate the additional classrooms required for Dr. M.S. Hawkins Senior PS.

Option D: Change in grade cohorts between Ganaraska Trail PS, North Hope Central PS and Dr. M.S. Hawkins Senior PS.

School	OTG Capacity	Portables (2022-23)	2022-23 Current Enrolment		2023-24 1-YR Projection		2027-28 5-YR Projection		2032-33 10-YR Projection	
			Students	Utilization	Students	Utilization	Students	Utilization	Students	Utilization
Ganaraska Trail PS (JK-4)	504	1		105%	238	91%	269	91%	266	90%
Ganaraska Trail PS (FI SK-4)			223		191		188			
Ganaraska Trail PS - Total Enrolment			529		461		454			
North Hope Central PS (JK-4)	95	0	118	124%	89	94%	91	96%	83	87%
Dr. M.S. Hawkins Senior PS (5-8)	216	0		125%	265	175%	273	175%	300	179%
Dr. M.S. Hawkins Senior PS (FI 5-8)			112		104		86			
Dr. M.S. Hawkins Senior PS - Total Enrolment			269		377		386			
Total @ Port Hope HS	951	0	493	52%	599	63%	600	63%	640	67%

Beatrice Strong PS

- Beatrice Strong PS remains status quo, as a JK to grade 6 school.
- Underutilization of Beatrice Strong PS is not addressed in this option.

Ganaraska Trail PS

- Ganaraska Trail PS becomes a dual track JK/SK to grade 4 school.
- Enrolment at Ganaraska Trail PS stabilizes below the school’s capacity over the 10-year projection period. There would be residual capacity at the school to accommodate the additional students generated from the impending residential development.

North Hope Central PS

- North Hope Central PS becomes JK to grade 4 school.
- Enrolment at North Hope Central PS stabilizes below the school’s capacity over the 10-year projection period. Enrolment would be effectively managed without the use of portables.

Dr. M.S. Hawkins Senior PS

- Dr. M.S. Hawkins Senior PS becomes dual track grade 5 to grade 8.
- The physical building, Port Hope HS, may not be able to accommodate the additional classrooms required for Dr. M.S. Hawkins Senior PS.

Option E: Boundary Adjustment between Beatrice Strong PS, Ganaraska Trail PS and/or North Hope Central PS.

A boundary adjustment can be utilized to balance enrolment between the elementary schools within the Port Hope HS FOS. Figure 2 illustrates study areas within the Ganaraska Trail PS boundary (GT) and the North Hope Central PS boundary (NH). Corresponding enrolment projections were completed for each study area and have been summarized in the options below.

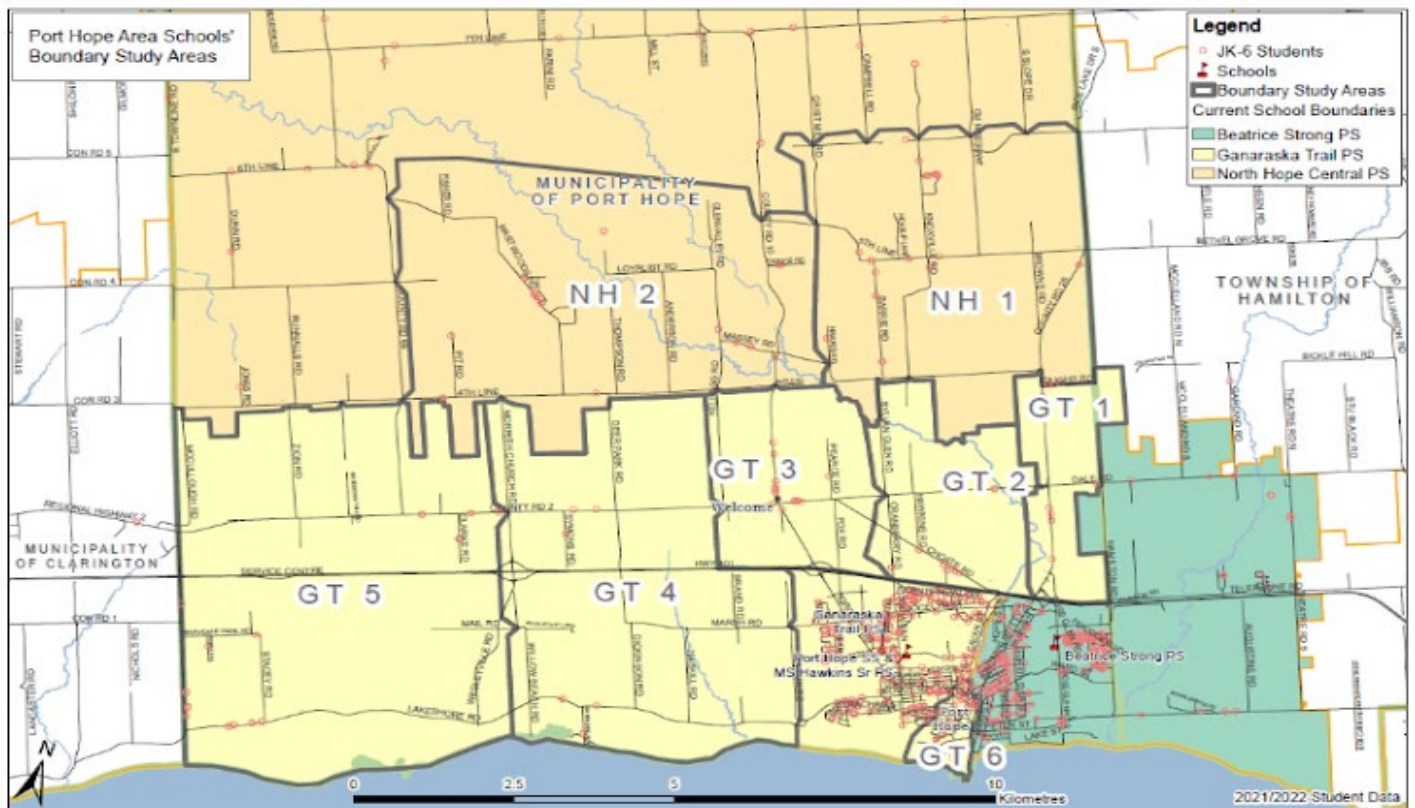


Figure 2: Boundary Adjustment Study Areas

Option E1: Boundary Adjustment would redirect students in study areas GT1, GT2, GT3, GT6, NH1 and NH2 to Beatrice Strong PS.

	OTG	2022-23	2023-24	2027-28	2032-33	
School/Study Area	Capacity	Current Enrolment	1-YR Projection	5-YR Projection	10-YR Projection	
Beatrice Strong PS	349	222	219	214	204	
Study Area GT 1		0	0	1	0	
Study Area GT2		0	12	15	16	
Study Area GT3		0	9	9	8	
Study Area GT6		0	23	29	32	
Study Area NH1		0	8	3	2	
Study Area NH2		0	5	3	2	
Adjusted Enrolment			222	276	274	264
Adjusted Utilization		64%	79%	79%	76%	
Ganaraska Trail PS	504	529	525	546	523	
Study Area GT 1		0	0	1	0	
Study Area GT2		0	12	15	16	
Study Area GT3		0	9	9	8	
Study Area GT6		0	23	29	32	
Adjusted Enrolment			529	481	492	467
Adjusted Utilization			105%	95%	98%	93%
North Hope Central PS		95	118	122	119	115
Study Area NH1	0		8	3	2	
Study Area NH2	0		5	3	2	
Adjusted Enrolment			118	109	113	111
Adjusted Utilization			124%	115%	119%	117%

Option E2: Boundary Adjustment would redirect students in study areas GT1, GT2, GT3, GT4, GT5, GT6, NH1 and NH2 to Beatrice Strong PS.

	OTG	2022-23	2023-24	2027-28	2032-33	
School/Study Area	Capacity	Current Enrolment	1-YR Projection	5-YR Projection	10-YR Projection	
Beatrice Strong PS	349	222	219	214	204	
Study Area GT 1		0	0	1	0	
Study Area GT2		0	12	15	16	
Study Area GT3		0	9	9	8	
Study Area GT4		0	4	1	0	
Study Area GT5		0	28	36	32	
Study Area GT6		0	23	29	32	
Study Area NH1		0	8	3	2	
Study Area NH2		0	5	3	2	
Adjusted Enrolment			222	308	311	296
Adjusted Utilization		64%	88%	89%	85%	
Ganaraska Trail PS	504	529	525	546	523	
Study Area GT 1		0	0	1	0	
Study Area GT2		0	12	15	16	
Study Area GT3		0	9	9	8	
Study Area GT4		0	4	1	0	
Study Area GT5		0	28	36	32	
Study Area GT6		0	23	29	32	
Adjusted Enrolment			529	449	455	435
Adjusted Utilization		105%	89%	90%	86%	
North Hope Central PS	95	118	122	119	115	
Study Area NH1		0	8	3	2	
Study Area NH2		0	5	3	2	
Adjusted Enrolment			118	109	113	111
Adjusted Utilization			124%	115%	119%	117%